

Supporting Statement
Center for Epidemiology and Animal Health (CEAH)
National Animal Health Monitoring System (NAHMS) Equine 2026 Study
OMB Control Number 0579-0269

Part B

B. Collections of Information Employing Statistical Methods

1. Describe (including a numerical estimate) the potential respondent universe and any sampling or other respondent selection method to be used. Data on the number of entities (e.g., establishments, State and local government units, households, or persons) in the universe covered by the collection and in the corresponding sample are to be provided in tabular form for the universe as a whole and for each of the strata in the proposed sample. Indicate expected response rates for the collection as a whole. If the collection had been conducted previously, include the actual response rate achieved during the last collection.

Phase I of the Equine 2026 Study will include a survey focusing on the health and management of equids¹ on equine operations, while Phase II of the Study will include a survey on biosecurity and management of equids at equine events², with optional biological testing for select pathogens of interest. The potential respondent universe for Phase I of the Equine 2026 Study is all operations on the National Agricultural Statistics Service (NASS) frame with 5 or more equids in all 50 States. See Table A.1 in Appendix A for the historical size of the population of operations with one or more equids, which is the closest published data to the potential respondent universe. NASS unpublished data were used internally for the sampling design.

The potential respondent universe for Phase II of the Equine 2026 Study is all equine events in 30 States³ that can be gathered from online sources and that are likely to draw participants from at least a large portion of a State or from out of State. Events that only draw participants from the local areas within the State where they are held will be excluded. A national list of equine events is not available from NASS or other sources, so the Animal and Plant Health Inspection Service (APHIS)–National Animal Health Monitoring System (NAHMS) will build a list for the study, as was done for the NAHMS Equine 2005 study of equine events.

For the Equine 2005 study⁴, a total of 3,379 events (2,018 unique events, accounting for events repeated throughout the year) were compiled and organized by state (California, Colorado, Florida,

¹ Equids include horses, ponies, mules, burros, and donkeys.

² Equine events include but are not limited to the following event types: Western performance events, rodeo, polo match, fair or exhibition, race, trail ride (recreational) or endurance, sale, auction, breed or discipline inspection, training clinic, draft-horse pull/shows, horse trials, dressage, 3-day eventing, hunter paces, and driving competitions.

³ Arizona, California, Colorado, Connecticut, Florida, Georgia, Hawaii, Illinois, Kentucky, Massachusetts, Maryland, Minnesota, Missouri, Mississippi, North Carolina, Nebraska, New Jersey, New York, Ohio, Oklahoma, Oregon, Pennsylvania, South Carolina, Texas, Utah, Virginia, Vermont, Washington, Wisconsin, and Wyoming.

⁴ For more information on the methods used in the Equine 2005 study, see https://www.aphis.usda.gov/sites/default/files/equine05_dr_events.pdf.

Kentucky, New York, and Texas) and study scope (State, regional, and national, with the same definitions as single State; multi-State, adjacent; and multi-State, non-adjacent, respectively, given below). Two-phase samples of approximately 60 events were taken within each of the 6 study States with the first phase being a systematic random sample among events not recurring a substantial number of times throughout the year and a stratified random sample of event occurrences among events recurring a substantial number of times throughout the year. Of the 367 events selected, 34 were not held or were cancelled and of the 333 remaining events, 252 (75.7 percent of held events) completed the study questionnaire. Only 57 events (17.1 percent of held events) were inaccessible.

A preliminary list of events for the Equine 2026 Study was constructed using the information collected from a select list of online websites. This list is detailed in Table A.3 and Figures A.5 and A.6 in Appendix A. Appendix E includes a more comprehensive list of sources intended to be used for the final list frame of events from which the sample will be selected. While it is unknown what the coverage of events was for the Equine 2005 Study and it is unknown what the coverage of events will be for the Equine 2026 Study, since there is no comprehensive list of equine events in the United States, extensive efforts to compile a list that is as comprehensive as possible of equine events held in the study states is being made, as was done in 2005. A broad variety of resources are planned to be used to identify events, including web searches through equine association and eventing websites, social media and blog posts, and news outlets, in addition to collaboration with Equine Association members, equine subject matter experts from the government at the Federal and State levels and at university and extension offices. Appendix E contains more information on the resources being considered for list frame building, and information on the resources used to compile the list for the Equine 2005 study are listed in Appendix II of the Equine 2005 Descriptive Report.

Phase I of the Study is of similar design, scope, and focus of previous APHIS– NAHMS Equine studies, conducted in 1998, 2005, and 2015. Phase I will consist of a single questionnaire administered to equine operation contacts, with a focus on equine health and management. Phase II of the study will not include the same equine operation contacts that were a part of Phase I. Phase II will focus on equine events, similar to the NAHMS Equine 2005 Events study, which was conducted in six States (California, Colorado, Florida, Kentucky, New York, and Texas).

One goal of APHIS–NAHMS national study design is to include States that account for at least 70 percent of the animals and operators/producers in the United States. Phase I will include all 50 States and so satisfies these requirements. This choice was made to ensure maximal representation of equine health, management, and biosecurity across the United States and was done in response to Study stakeholder input and conversations with NASS statisticians on the design of the Study. For Phase II, the 30 selected States account for 83.0 percent of the events in the preliminary selection of listed events. See Table A.3 and Figures A.5 and A.6 in Appendix A for more information on the state selection for Phase II.

Completion rates for Phase I of previous NAHMS Equine and related NAHMS studies are listed in Table C.1 and completion rates for the biologics components of the NAHMS Equine 2015 and NAHMS Goat 2019 studies are presented in Table C.2. Briefly, it is expected that the completion rate to Phase I will be 30 percent (approximately the average of the response rates to the studies

from NAHMS Equine 2015 through NAHMS Bison 2022). It is expected that the response rate for the Phase II event questionnaire will be 30 percent as well. For the events that have a completed questionnaire, it is expected that approximately 60 percent (approximately the average of the completion rate across biologics types for NAHMS Equine 2015 and NAHMS Goat 2019) will elect to complete the biologics sampling. Within the events that elect to complete the biologics sampling, it is expected that 60 percent of individuals selected to participate in individual biologics sampling will participate.

2. Describe the procedures for the collection of information including:

Statistical methodology for stratification and sample selection:

For Phase I of the study, a total sample of approximately 3,600 operations will be sampled from the NASS frame of equine operations with 5 or more equids in the 50 United States. Selected operations will be drawn as a stratified random sample, with strata defined by state and operation size category, with the size categories being as defined below.

- **Operation size** (number of equids)
 - Small (5–9)
 - Medium (10–19)
 - Large (20 or more)

NAHMS and NASS staff will work together to allocate the sample based on population count estimates provided by NASS. The sample will be allocated by State and by size category based on a weighted average of inventory and the number of operations within each stratum to select large operations with a larger probability than they would be selected in a simple random sample. Within strata, a simple random sample of equine operations will be selected.

For Phase II of the study, a list frame of equine events occurring from January 2027 through December 2027 will be constructed using the resources listed in Appendix E. From the list, a stratified random sample of events will be selected, with strata defined by State, event scope, and season. Event scope, a categorization of the events based on the intended source of participants, and season are defined as below. Phase II was originally planned to take place in 2026, but it was delayed.

- **Event scope**
 - **Multi-State, non-adjacent:** The event is intended to include participants from multiple, non-adjacent States,
 - **Multi-State, adjacent:** The event is intended to include participants from multiple, adjoining States, or
 - **Single State:** the event is intended to include participants only from an entire state.
- **Season** (months)
 - **Winter** (January 2027–February 2027, December 2027)

- o **Spring** (March 2027–May 2027)
- o **Summer** (June 2027–August 2027)
- o **Fall** (September 2027–November 2027)

The event sample will be allocated uniformly by State, event scope, and season strata so that there will be two to three events per stratum to allow for a primary event to be contacted in that stratum with one or two backup events in case the first event is inaccessible or refuses participation while still allowing coverage of the scopes and seasons expected to have impacts on biosecurity risks, practices, and disease pathogen presence.

Estimation procedure:

The sampling design is a stratified random sample with unequal probabilities of selection across sampling strata. Statistical estimation will be undertaken using either SAS survey procedures or SUDAAN. Both software packages use a Taylor series expansion to estimate appropriate variances for the stratified, weighted data. Phase I selection weights and Phase II selection weights, constructed using the built list frame of equine events, will be adjusted for nonresponse, calibrated to known population totals, and trimmed if necessary.

Degree of precision needed for the purpose described in the justification:

NAHMS’ goal is to produce descriptive statistics (proportions or means) with a coefficient of variation (CV) of 20.0 percent or less. If possible, given adequate response rates, reporting will be at the national, regional, and operation size levels, with operation size being defined as above and region being defined as below. In addition, reporting for specific tables will be broken out by primary function of the operation and primary use of the equids on the operation, where sample size and precision requirements are met.

- **Region** (States)
 - o **West** (Alaska, Arizona, California, Colorado, Hawaii, Idaho, Montana, New Mexico, Nevada, Oregon, Utah, Washington, Wyoming)
 - o **South** (Alabama, Arkansas, Florida, Georgia, Kentucky, Louisiana, Mississippi, North Carolina, Oklahoma, South Carolina, Tennessee, Texas)
 - o **North Central** (Iowa, Illinois, Indiana, Kansas, Michigan, Minnesota, Missouri, North Dakota, Nebraska, Ohio, South Dakota, Wisconsin)
 - o **Northeast** (Connecticut, Delaware, Massachusetts, Maryland, Maine, New Hampshire, New Jersey, New York, Pennsylvania, Rhode Island, Vermont, West Virginia, Virginia)
- **Primary function of the operation**
 - o Equine boarding stable/training
 - o Riding stable
 - o Equine breeding farm
 - o Farm/ranch
 - o Residence with equids for personal use

- o Other
- **Primary use of the equids on the operation**
 - o Pleasure/recreation
 - o Lessons/school
 - o Showing/competition not betting
 - o Breeding
 - o Farm or ranch work
 - o Other

For Phase I, to meet the precision criteria within each of the given stratification cells, we require an overall sample size of approximately 900 assuming that a simple random sample with a perfect response rate is taken. However, due to practical considerations, we must account for the expected completion rate of approximately 30.0 percent and an expected design effect of approximately 1.2 (derived from a sample of questions from NAHMS Equine 2015) to obtain estimates meeting the precision criterion of aiming for a CV of 20.0 percent or less. An overall sample size of 3,600 is required after adjusting for these factors. Tables B.1 and B.2 in Appendix B show estimates of precision based on the total sample of 3,600, Nationally, by region, and by operation size. All the estimated CVs for Phase I are expected to be within the desired range.

For Phase II, field work and budget considerations limited the total completion count to approximately 850 events, where each event would have 1 or 2 backup events in the case of an event being inaccessible or refusing participation. The precision of event-level estimates with this sample size can be found in Tables B.3–B.5 in Appendix B, most of which are below 20.0 percent. The precision of equine-level estimates of pathogen prevalence using the biologics samples are given in Table B.6.

Reporting strata may be adjusted depending on the number of respondents. In general, if sample sizes are too small or CVs too large, those estimates are not published.

- **Unusual problems requiring specialized sampling procedures and data collection cycles:**

There are no unusual problems requiring specialized sampling procedures and data collection cycles.

- **Any use of periodic (less frequent than annual) data collection cycles to reduce burden:**

The data collection described is not planned to be carried out on an annual or less than annual frequency basis.

3. Describe methods to maximize response rates and to deal with issues of non-response. The accuracy and reliability of information collected must be shown to be adequate for intended uses. For collections based on sampling, a special justification must be provided for any collection that will not yield "reliable" data that can be generalized to the universe studied.

- **Questionnaire Design and Training:**

1. The study minimizes collection of data to that which is absolutely necessary to meet the stated objectives. Questionnaires are extensively reviewed by APHIS staff, NASS staff, and industry experts.
2. The Equine 2026 study lead has made numerous contacts and collaborative efforts to identify the information needs of the equine industry and the best way to ask for that information via questionnaire.
3. Skip logic is used in both Phase I and Phase II questionnaires to guide respondents to sections relevant to their operation and practices and avoid sections that would not be applicable to their operation.
4. Data collectors and data handlers will have been trained on data and information security guidelines.
5. For Phase I data collection, NAHMS staff will develop training materials, including an interviewer's manual, for NASS enumerators that explain the purpose of the study as well as benefits of participation to equine owners and to the industry, and address anticipated difficulties with questions. NAHMS and NASS will co-lead training meetings with NASS staff and enumerators.
6. For Phase II data collection, APHIS coordinators and the State and university data collectors will receive specialized training, demonstrations, and materials from NAHMS staff to prepare them for data collection.

- **Contacting Respondents:**

1. Equine owners contacted during Phase I will be mailed introductory information regarding the study so that they know how the study may benefit them and the equine industry and will know what is coming and what is required to complete the study. They will also receive a survey mailing, which will include the questionnaire, and a reminder mailing, and will be followed up with by telephone or in-person visit. Multiple, but limited, contact events have been used in previous NAHMS studies to promote response on a timeline and via a mode that works best for the owner.
2. Event representatives contacted during Phase II will be mailed, emailed, or texted introductory information regarding the study that will include an overview of the study benefits and requirements and the questionnaire. Federal staff will follow up with them by telephone to schedule a time during which they would like to complete the

- questionnaire and/or a time during which they would like biological samples to be collected. To align with the event schedules, mailings and telephone calls to event representatives will be made monthly or semi-monthly throughout the data collection period.
3. The study is supported by the American Horse Council and the American Association of Equine Practitioners. The Equine 2026 study lead will work with representatives from these groups to promote the study.
 4. Promotional materials will be published to announce the upcoming study to potential study participants and stakeholders via stakeholder releases, social media releases, and other communications with industry and related groups.
 5. Thank you cards will be sent to equine owners who complete Phase I and to the event representatives who complete Phase II of the Study. Informational graphics displaying findings from the Study will also be sent to those who complete Phase I and to those event representatives who complete Phase II of the Study.
 6. NASS enumerators have gone through specific training to help them answer questions of reluctant owners to maximize response rates. Training for the APHIS coordinators and the State and university data collectors will include specific suggestions from the previous participants in NAHMS studies based on their experience in avoiding and converting refusals.
- **Nonresponse adjustment:**
 1. Baseline response rates are taken from NAHMS Equine and other previous NAHMS studies and are shown in Tables C.1 and C.2 in Appendix C.
 2. For Phase I, APHIS will adjust selection weights, which will be provided by NASS, for non-response using NASS-supplied stratification variables. Weights of eligible non-respondents will be transferred to responding equine operations that are most similar based on available data, including the State and operation size category stratification variables. The non-response adjustment will use the method of propensity scores, in which a logistic regression model is constructed to predict the probability of responding. The inverse of this probability is the nonresponse adjustment. For Phase II, the propensity score nonresponse adjustment method will be used to adjust the selection weights in a similar way, though the selection weights will be constructed using the list frame of events in the 30 study States, and the strata will be defined by State, event scope, and season.
 3. If the respondents differ substantially from the non-respondents, then there is potential for bias. NASS' List Frame data may be available for both respondents and non-respondents to allow for examination of potential differences in type of responding and non-responding equine operations. If needed, APHIS will perform a non-response bias analysis to investigate unexpected response patterns to guide future sampling efforts. If

significant nonresponse bias is found, the factors contributing to the bias will be incorporated into the nonresponse weight adjustment using post-stratification raking procedures.

- **Sampling and design strategies:**

1. Multiple mode options for response were chosen to meet the varied response mode preferences of equine owners. Preferred response modes vary across the population, and so making available a selection of response opportunities to fit owner's schedules and preferences has been important to maximizing response and will continue to be important going forward. Paper-assisted self-interviews (via the mail), computer-assisted self-interviews (via the web), paper- and computer-assisted telephone interviews (via telephone), and paper- and computer-assisted personal interviews (face-to-face) modes will be used.
2. In-person interview options are planned to be included in both phases of the study. Previous NAHMS studies that included in-person interview options, including the Goat 2019 and Sheep 2024 studies, tend to have greater completion rates compared to studies for which that option is not available.

4. Describe any tests of procedures or methods to be undertaken. Testing is encouraged as an effective means of refining collections of information to minimize burden and improve utility. Tests must be approved if they call for answers to identical questions from 10 or more respondents. A proposed test or set of tests may be submitted for approval separately or in combination with the main collection of information.

APHIS and NASS will review and pretest the survey prior to field enumeration, involving fewer than 10 respondents. APHIS will use the results of these pretests to refine the Phase I and Phase II questionnaires to reduce respondent burden and improve the accuracy and usefulness of the information. The pretested and revised questions from the NAHMS Equine 1998, 2005, and 2015 Studies will be used as a baseline, where possible, to borrow from the work performed during those studies and to ensure that trends on particular topics can be drawn across the studies. The final questionnaires will have been reviewed by a variety of experts, including academic researchers, industry representatives, extension agents, veterinarians, health specialists, and epidemiologists.

5. Provide the name and telephone number of individuals consulted on statistical aspects of the design and the name of the agency unit, contractor(s), grantee(s), or other person(s) who will actually collect and/or analyze the information for the agency.

The statistical aspects of the design were coordinated by:

- Matthew Branan, Mathematical Statistician, formerly with National Animal Health Monitoring System, USDA, APHIS, VS, CEAH, Fort Collins, CO (970-494-7349).

For survey design and methodology and for a NASS review of the OMB package submission, NAHMS will coordinate with survey methodologists reporting to:

- Adam Cline, Chief, Standards and Survey Development Methodology Branch, USDA, NASS, Washington, DC (202-531-6010).

The actual data collection will be conducted by NASS enumerators (Phase I) and APHIS-designated data collectors (Phase II). Contact persons for data collection are:

- Scott Cox, Chief, Survey Administration Branch, USDA, NASS, Washington, DC (202-720-6201).
- Dr. Rosemary Sifford, Deputy Administrator, Veterinary Services, USDA, APHIS, Washington, DC (202-799-7147).
- Dr. Andrea Beam, Acting Assistant Director, National Animal Health Monitoring System, USDA APHIS, VS, CEAH, Fort Collins, CO (352-414-8461).

Analysis of the data will be accomplished by APHIS–NAHMS veterinarians, epidemiologists, and statisticians under the direction of:

- Dr. Andrea Beam, Acting Assistant Director, National Animal Health Monitoring System, USDA APHIS, VS, CEAH, Fort Collins, CO (352-414-8461).

Appendix A: State selection

State selection for Phase I of the study was considered based on the percentage of equine inventory and operations, equine density, and the trends of the counts of equine inventory and operations, by State. Population counts were taken from the 2022 Census of Agriculture data. The overall inventory and operation counts, by operation size, are given in Table A.1, while State-level inventory and operation counts, percentages, and equine density are presented in Table A.2. Historical equine inventory and numbers of equine operations were taken from the same two reports and are depicted in Figures A.1–A.2. For comparison, the States included in previous NAHMS Equine studies are included in Figure A.3 and the proposed regions for the Equine 2026 Study are depicted in Figure A.4.

Table A.1: Number and percentage of inventory of equids and number of operations with equids, by equine type and by operation size (number of equids), from the NASS 2022 Census of Agriculture.

Operation size (number of equids)	Inventory						Operations			
	Horses and ponies		Mules, burros, and donkeys		All equids		Horses and ponies		Mules, burros, and donkeys	
	No.	Pct.	No.	Pct.	No.	Pct.	No.	Pct.	No.	Pct.
1 to 24	1,745,499	72.4	238,152	92.4	360,034	96.6	98,386	99.7	1,745,499	72.4
25 to 49	298,591	12.4	8,407	3.3	9,215	2.5	264	0.3	8,591	12.4
50 to 99*	172,407	7.2	11,266	4.4	2,651	0.7	76	0.1	2,407	7.2
100 or more	194,735	8.1			910	0.2			19,4735	8.1
Total	2,411,232	100.0	257,825	100.0	372,810	100.0	98,726	100.0	2,411,232	100.0

*Inventory and operations with inventory of mules, burros, and donkeys are published with size categories of 1 to 24, 25 to 49, and 50 or more only.

Table A.2: Number and percentage of inventory of equids and number of operations with equids, by equine type and by State, from the NASS 2022 Census of Agriculture. Also includes land area (square miles) and equine density (total inventory of horses, ponies, mules, burros, and donkeys per square mile of land area), by State.

State	Inventory						Operations				Equine density	
	Horses and ponies		Mules, burros, and donkeys		All equids		Horses and ponies		Mules, burros, and donkeys		Land area (mi ²)	Density
	No.	Pct.	No.	Pct.	No.	Pct.	No.	Pct.	No.	Pct.	No.	No.
AK	1,237	0.1	34	0.0	1,271	0.1	175	0.1	15	0.0	570,641	0.0
AL	33,096	1.4	7,416	2.9	40,512	1.5	6,480	1.7	2,890	2.9	50,645	0.8
AR	37,835	1.6	6,787	2.6	44,622	1.7	7,565	2.0	2,841	2.9	52,035	0.9
AZ	61,878	2.6	2,255	0.9	64,133	2.4	8,458	2.3	792	0.8	113,594	0.6
CA	92,831	3.9	5,607	2.2	98,438	3.7	11,077	3.0	1,910	1.9	155,779	0.6
CO	75,992	3.2	5,304	2.1	81,296	3.1	10,691	2.9	1,988	2.0	103,642	0.8
CT	9,634	0.4	706	0.3	10,340	0.4	1,071	0.3	276	0.3	4,842	2.1
DE	3,819	0.2	147	0.1	3,966	0.2	416	0.1	67	0.1	1,949	2.0
FL	83,114	3.5	8,689	3.4	91,803	3.4	9,832	2.6	3,299	3.3	53,625	1.7
GA	37,342	1.6	8,024	3.1	45,366	1.7	6,072	1.6	2,809	2.9	57,513	0.8
HI	4,316	0.2	279	0.1	4,595	0.2	653	0.2	103	0.1	6,423	0.7
IA	45,033	1.9	3,133	1.2	48,166	1.8	7,306	2.0	1,292	1.3	55,857	0.9
ID	41,412	1.7	2,716	1.1	44,128	1.7	6,660	1.8	903	0.9	82,643	0.5
IL	33,348	1.4	2,854	1.1	36,202	1.4	5,506	1.5	1,273	1.3	55,519	0.7
IN	76,743	3.2	3,528	1.4	80,271	3.0	10,079	2.7	1,427	1.5	35,826	2.2
KS	42,345	1.8	3,691	1.4	46,036	1.7	7,188	1.9	1,563	1.6	81,759	0.6
KY	111,402	4.6	10,770	4.2	122,172	4.6	13,767	3.7	4,316	4.4	39,486	3.1
LA	34,652	1.4	4,942	1.9	39,594	1.5	5,931	1.6	1,800	1.8	43,204	0.9
MA	13,457	0.6	830	0.3	14,287	0.5	1,422	0.4	255	0.3	7,800	1.8
MD	26,115	1.1	1,246	0.5	27,361	1.0	2,919	0.8	618	0.6	9,707	2.8
ME	6,744	0.3	437	0.2	7,181	0.3	1,181	0.3	221	0.2	30,843	0.2
MI	54,511	2.3	3,051	1.2	57,562	2.2	7,991	2.1	1,358	1.4	56,539	1.0
MN	40,131	1.7	3,060	1.2	43,191	1.6	6,988	1.9	1,319	1.3	79,627	0.5
MO	75,250	3.1	9,486	3.7	84,736	3.2	14,489	3.9	3,825	3.9	68,742	1.2
MS	31,678	1.3	5,884	2.3	37,562	1.4	6,164	1.7	2,303	2.3	46,923	0.8
MT	63,784	2.7	2,813	1.1	66,597	2.5	8,942	2.4	1,093	1.1	145,546	0.5
NC	40,097	1.7	9,410	3.7	49,507	1.9	6,803	1.8	3,631	3.7	48,618	1.0
ND	24,398	1.0	680	0.3	25,078	0.9	3,332	0.9	329	0.3	69,001	0.4
NE	38,487	1.6	2,245	0.9	40,732	1.5	6,371	1.7	867	0.9	76,824	0.5
NH	4,869	0.2	265	0.1	5,134	0.2	787	0.2	131	0.1	8,953	0.6
NJ	20,782	0.9	1,550	0.6	22,332	0.8	2,368	0.6	562	0.6	7,354	3.0
NM	34,901	1.5	1,761	0.7	36,662	1.4	7,243	1.9	845	0.9	121,298	0.3
NV	12,055	0.5	516	0.2	12,571	0.5	1,431	0.4	166	0.2	109,781	0.1
NY	62,404	2.6	2,793	1.1	65,197	2.4	7,148	1.9	1,257	1.3	47,126	1.4
OH	91,418	3.8	7,270	2.8	98,688	3.7	13,571	3.6	2,880	2.9	40,861	2.4
OK	100,916	4.2	14,672	5.7	115,588	4.3	17,840	4.8	5,553	5.6	68,595	1.7
OR	60,127	2.5	3,459	1.3	63,586	2.4	8,795	2.4	1,425	1.4	95,988	0.7
PA	80,869	3.4	7,301	2.8	88,170	3.3	12,049	3.2	2,265	2.3	44,743	2.0
RI	1,074	0.0	57	0.0	1,131	0.0	143	0.0	35	0.0	1,034	1.1
SC	30,673	1.3	4,893	1.9	35,566	1.3	4,934	1.3	1,958	2.0	30,061	1.2
SD	41,761	1.7	1,250	0.5	43,011	1.6	5,236	1.4	600	0.6	75,811	0.6
TN	70,919	2.9	14,614	5.7	85,533	3.2	13,355	3.6	5,437	5.5	41,235	2.1
TX	273,554	11.3	59,630	23.1	333,184	12.5	49,818	13.4	21,742	22.0	261,232	1.3
UT	49,735	2.1	3,249	1.3	52,984	2.0	7,190	1.9	799	0.8	82,170	0.6
VA	55,258	2.3	6,461	2.5	61,719	2.3	8,128	2.2	2,727	2.8	39,490	1.6
VT	7,633	0.3	319	0.1	7,952	0.3	1,012	0.3	158	0.2	9,217	0.9
WA	44,968	1.9	2,019	0.8	46,987	1.8	7,086	1.9	893	0.9	66,456	0.7
WI	60,653	2.5	4,023	1.6	64,676	2.4	9,790	2.6	1,788	1.8	54,158	1.2
WV	17,344	0.7	3,274	1.3	20,618	0.8	4,105	1.1	1,472	1.5	24,038	0.9
WY	48,638	2.0	2,425	0.9	51,063	1.9	5,252	1.4	650	0.7	97,093	0.5
Total	2,411,232	100.0	257,825	100.0	2,669,057	100.0	372,810	100.00	98,726	100.0		

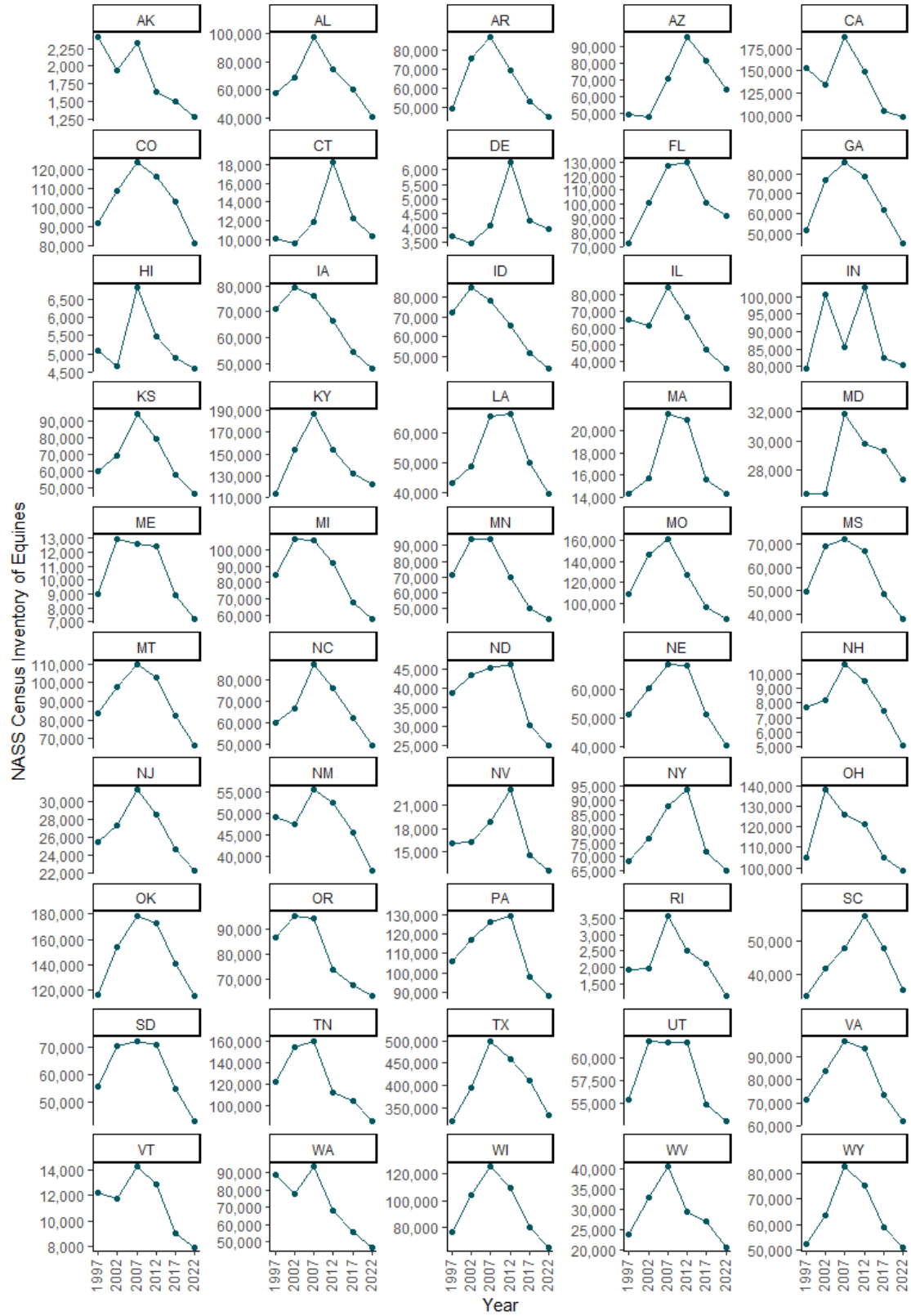


Figure A.1: NASS Census of Agriculture equine inventory, by year 1997 to 2022 and by state.

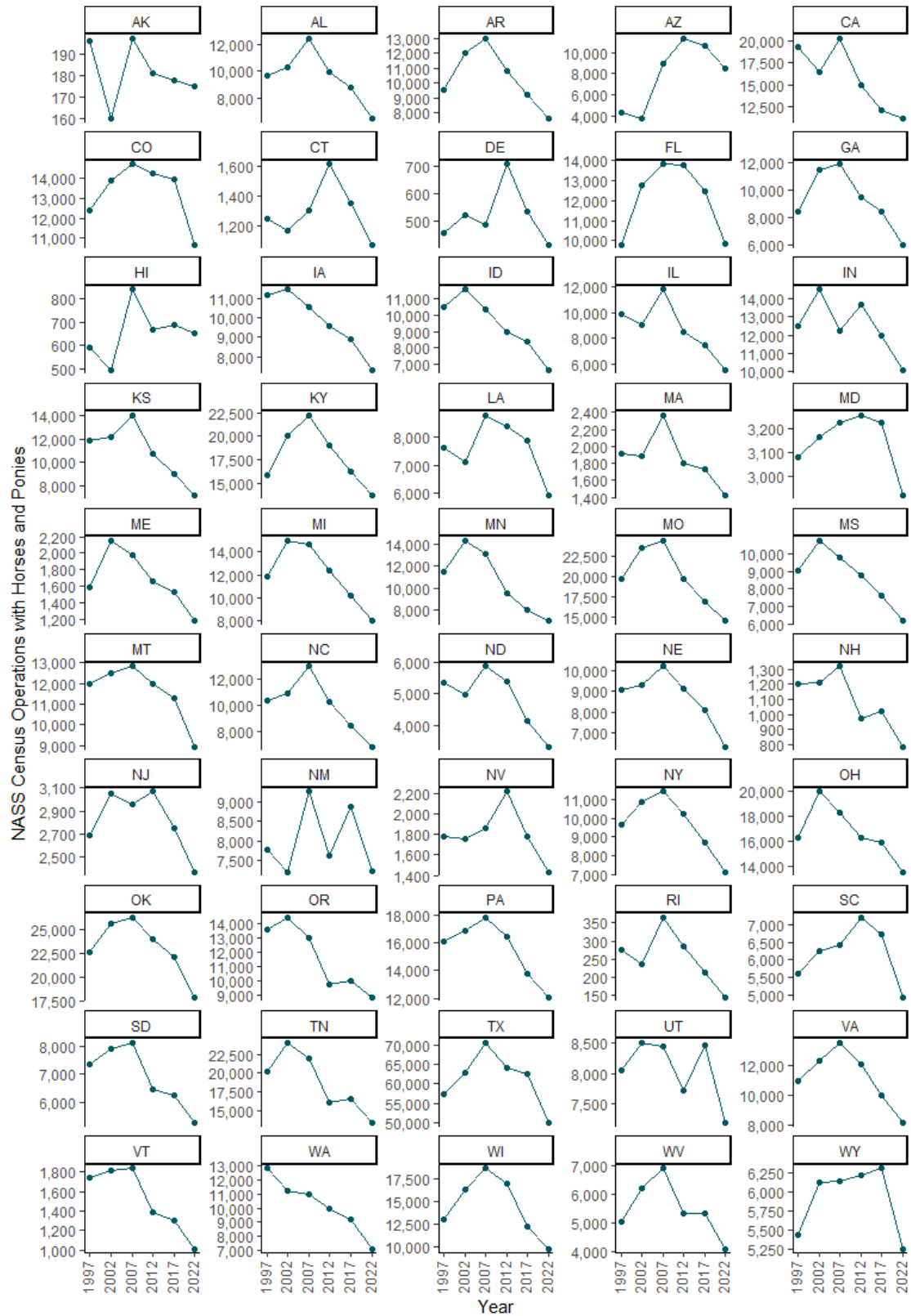
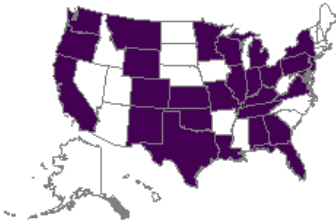


Figure A.2: NASS Census of Agriculture counts of operations with horses and ponies, by year from 1997 to 2022 and by state.

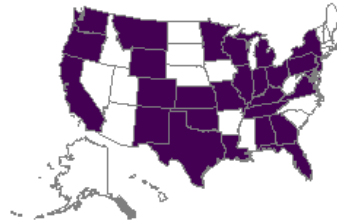
As a comparison, the States included in previous NAHMS Equine studies are depicted in Figure A.3.

Equine 1998



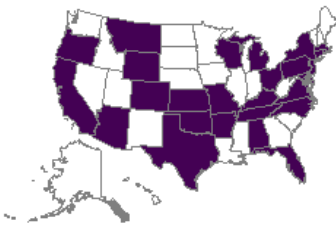
■ In study
□ Not in study

Equine 2005



■ In study
□ Not in study

Equine 2015



■ In study
□ Not in study

Figure A.3: States included in previous NAHMS Equine studies.

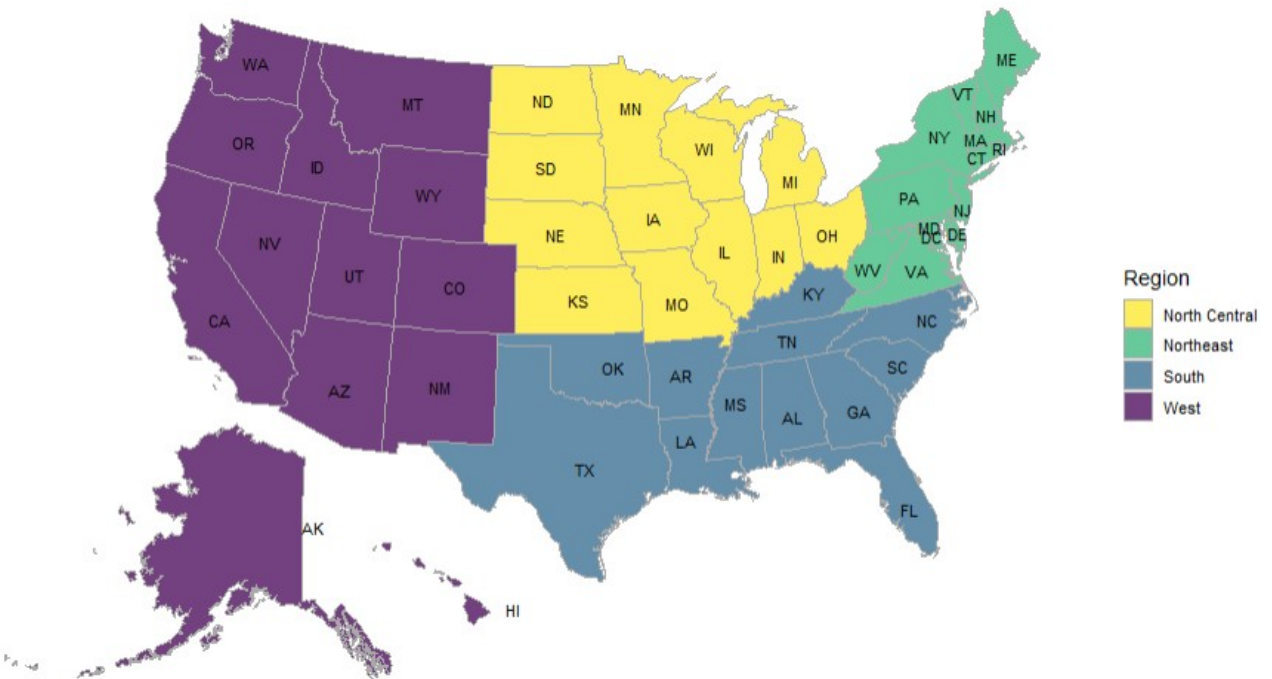


Figure A.4: Proposed regions for the Equine 2026 Study.

For Phase II, we present the findings of a preliminary list of equine events, compiled from the following websites using manual and R-based extraction.

- American Quarter Horse Association (AQHA): <https://www.aqha.com/>
- National Cutting Horse Association (NCHA): <https://nchacutting.com/>
- National Reined Cow Horse Association (NRCHA): <https://www.nrcha.com/>
- Pro Rodeo Cowboys Association (PRCA): <https://www.prorodeo.com/>
- United States Equestrian Federation (USEF): <https://www.usef.org/>

The States for Phase II were selected based on the representation of the percentage of events, input from stakeholders and APHIS field staff coordinators, and geographic representation. The number and percentage of events are presented in Table A.3 and a map of the included States is included in Figure A.5. A bar chart showing the count of events by region and by month of the year is included in Figure A.6.

Table A.3: Number and percentage of events from the preliminary list of equine events, by State. Selected study states are highlighted in grey.

State	Number of events	Percentage of events
AK	7	0.1
AL	53	0.9
AR	29	0.5
AZ	184	3.0
CA	389	6.4
CO	215	3.5
CT	58	1.0
DE	-	0.0
FL	453	7.4
GA	133	2.2
HI	4	0.1
IA	43	0.7
ID	83	1.4
IL	81	1.3
IN	27	0.4
KS	62	1.0
KY	110	1.8
LA	105	1.7
MA	56	0.9
MD	50	0.8
ME	12	0.2
MI	66	1.1
MN	168	2.8
MO	159	2.6
MS	128	2.1
MT	118	1.9
NC	166	2.7
ND	37	0.6
NE	109	1.8
NH	6	0.1
NJ	160	2.6
NM	31	0.5
NV	100	1.6
NY	217	3.6
OH	180	2.9
OK	151	2.5
OR	112	1.8
PA	180	2.9
RI	2	0.0
SC	106	1.7
SD	82	1.3
TN	145	2.4
TX	909	14.9
UT	99	1.6
VA	128	2.1
VT	20	0.3
WA	192	3.1
WI	67	1.1
WV	34	0.6
WY	77	1.3
Total	6,103	100.0

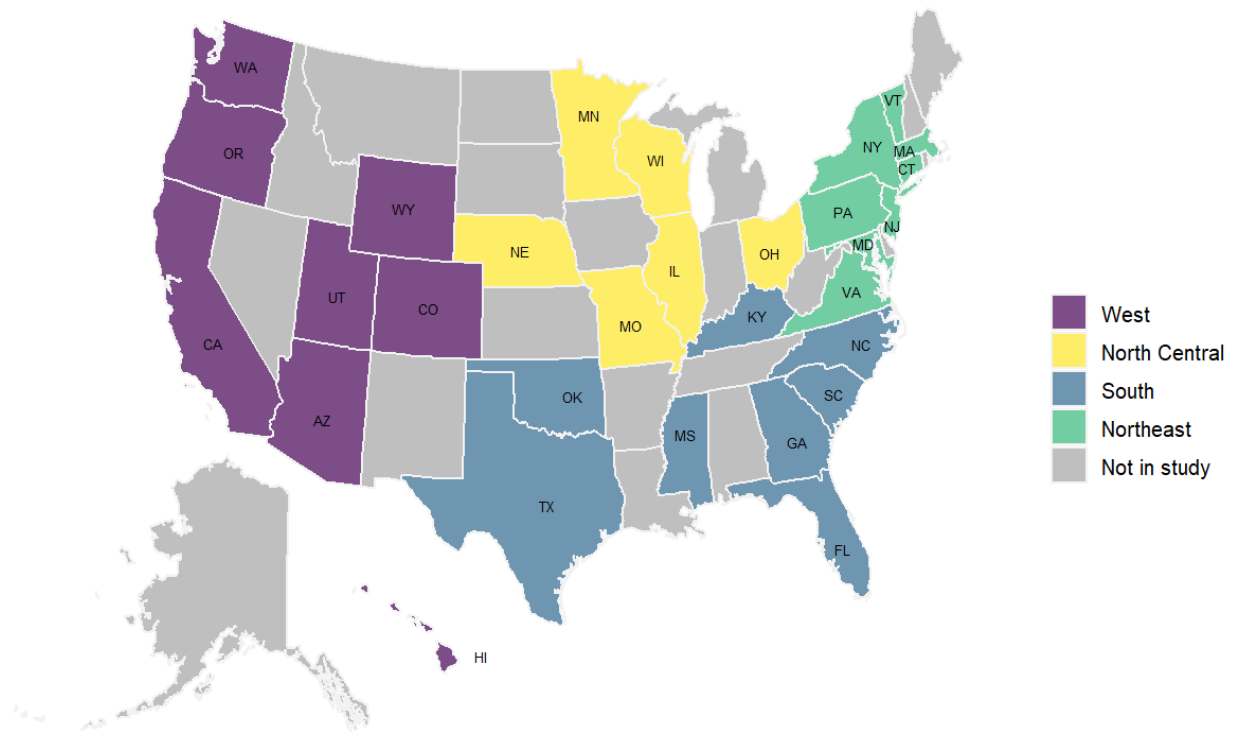


Figure A.5: Selected study States for Phase II of the study, by region.

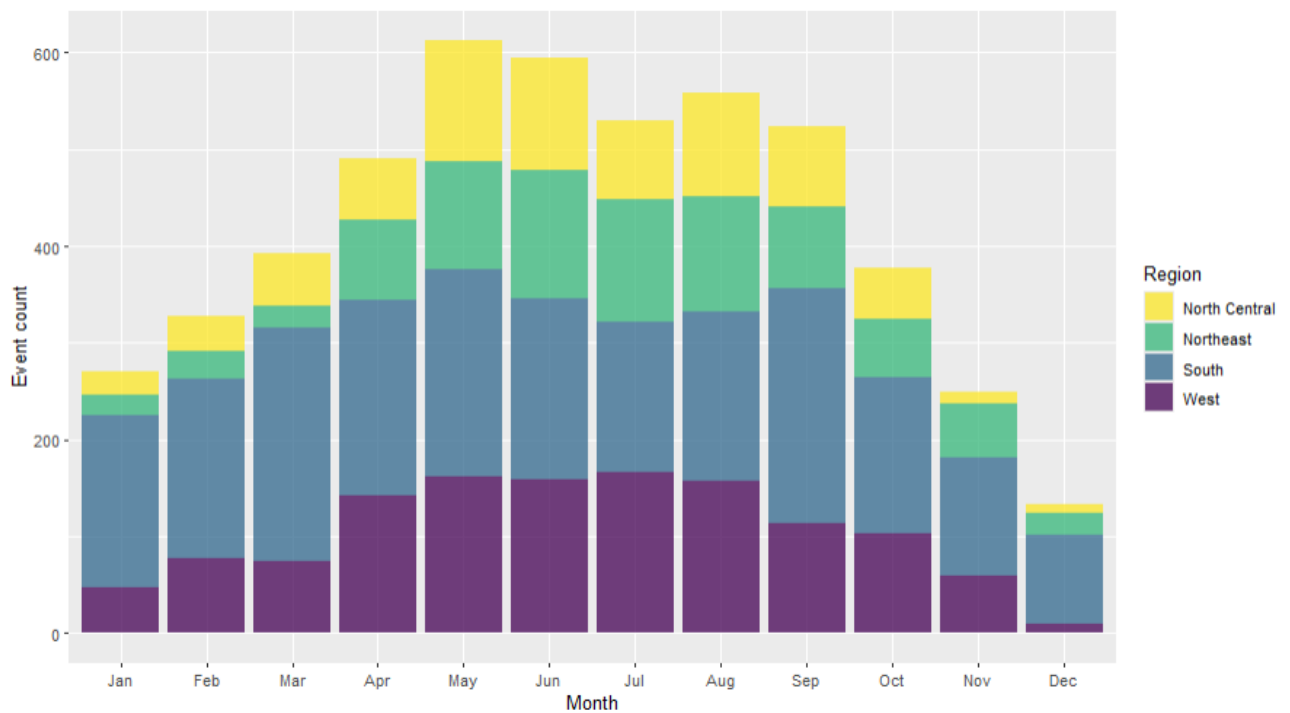


Figure A.6: Counts of events by region and by month of the year, as found during the preliminary list frame construction.

Appendix B: Expected estimates of precision

Estimates of precision are shown for proportions of 0.50, 0.25, and 0.10. None of the Phase I CV estimates exceed 20.0 percent (Tables B.1 and B.2). For Phase II (Tables B.3–B.5), the CV estimates don't exceed 20.0 percent for proportions of 0.25 or greater, though the CV estimates for proportions of 0.10 are all below 20.0 percent except for three of the four categories when broken out by each of region and season. CV estimates for equine-level estimates of pathogen prevalence (see Table B.6) all exceed 20.0 percent except for the prevalence estimates overall.

Table B.1. Precision of estimates by region and by expected proportion, at 95 percent confidence for Phase I.

Region (states)	Approximate overall sample size	Proportion estimate	Phase I CV estimate (%)
West ¹	900	0.50	6.7
		0.25	11.5
		0.10	20.0
South ²	896	0.50	6.6
		0.25	11.5
		0.10	19.9
North Central ³	904	0.50	6.7
		0.25	11.5
		0.10	20.0
Northeast ⁴	900	0.50	6.7
		0.25	11.5
		0.10	20.0
Total	3,600	0.50	3.3
		0.25	5.8
		0.10	10.0

¹Alaska, Arizona, California, Colorado, Hawaii, Idaho, Montana, New Mexico, Nevada, Oregon, Utah, Washington, Wyoming

²Alabama, Arkansas, Florida, Georgia, Kentucky, Louisiana, Mississippi, North Carolina, Oklahoma, South Carolina, Tennessee, Texas

³Iowa, Illinois, Indiana, Kansas, Michigan, Minnesota, Missouri, North Dakota, Nebraska, Ohio, South Dakota, Wisconsin

⁴Connecticut, Delaware, Massachusetts, Maryland, Maine, New Hampshire, New Jersey, New York, Pennsylvania, Rhode Island, Vermont, West Virginia, Virginia

Table B.2. Precision of estimates by operation size and by expected proportion, at 95 percent confidence for Phase I.

Operation size (number of equids)	Approximate overall sample size	Proportion estimate	Phase I CV estimate (%)
Small (5–9)	900	0.50	5.8
		0.25	10.0
		0.10	17.3
Medium (10–19)	896	0.50	5.7
		0.25	10.0
		0.10	17.2
Large (20 or more)	904	0.50	5.7
		0.25	9.9
		0.10	17.2
Total	3,600	0.50	3.3
		0.25	5.8
		0.10	10.0

Table B.3. Precision of estimates by region and by expected proportion, at 95 percent confidence for Phase II.

Region (states)	Approximate overall sample size	Proportion estimate	Phase II CV estimate (%)
West ¹	243	0.50	6.7
		0.25	11.6
		0.10	20.1
South ²	243	0.50	6.4
		0.25	11.2
		0.10	19.3
North Central ³	182	0.50	7.3
		0.25	12.6
		0.10	21.8
Northeast ⁴	182	0.50	7.4
		0.25	12.8
		0.10	22.1
Total	850	0.50	3.5
		0.25	6.0
		0.10	10.5

¹Arizona, California, Colorado, Hawaii, Oregon, Utah, Washington, Wyoming

²Florida, Georgia, Kentucky, Mississippi, North Carolina, Oklahoma, South Carolina, Texas

³Illinois, Minnesota, Missouri, Nebraska, Ohio, Wisconsin

⁴Connecticut, Maryland, Massachusetts, New Jersey, New York, Pennsylvania, Vermont, Virginia

Table B.4. Precision of estimates by season and by expected proportion, at 95 percent confidence for Phase II.

Season (months)	Approximate overall sample size	Proportion estimate	Phase II CV estimate (%)
Winter (January 2027– February 2027, December 2027)	212	0.50	6.5
		0.25	11.3
		0.10	19.6
Spring (March 2027– May 2027)	212	0.50	7.1
		0.25	12.2
		0.10	21.2
Summer (June 2027– August 2027)	213	0.50	7.1
		0.25	12.3
		0.10	21.3
Fall (September 2027– November 2027)	213	0.50	6.9
		0.25	12.0
		0.10	20.7
Total	850	0.50	3.5
		0.25	6.0
		0.10	10.5

Table B.5. Precision of estimates by event scope and by expected proportion, at 95 percent confidence for Phase II.

Event scope	Approximate overall sample size	Proportion estimate	Phase II CV estimate (%)
Multi-state, non-adjacent	284	0.50	6.0
		0.25	10.5
		0.10	18.1
Multi-state, adjacent	283	0.50	6.0
		0.25	10.5
		0.10	18.1
Single state	283	0.50	6.0
		0.25	10.5
		0.10	18.1
Total	850	0.50	3.5
		0.25	6.0
		0.10	10.5

Table B.6. Precision of horse level pathogen prevalence estimates breakout variable, at 95 percent confidence for the biologics sampling.

Breakout variable	Breakout variable level	Approximate sample size	Equine Level <i>Salmonella</i> Prevalence CV estimate (%)	Equine Level Coronavirus Prevalence CV estimate (%)	Equine Level EHV-1 Prevalence CV estimate (%)	Equine Level EHV-4 Prevalence CV estimate (%)
Region	West ¹	1,214	28.4	28.4	22.0	35.4
	South ²	1,214	28.4	28.4	22.0	35.4
	North Central ³	911	32.8	32.8	25.4	40.8
	Northeast ⁴	911	32.8	32.8	25.4	40.8
Season (months)	Winter (January–February 2027, December 2027)	1,062	30.4	30.4	23.5	37.8
	Spring (March 2027–May 2027)	1,062	30.4	30.4	23.5	37.8
	Summer (June 2027–August 2027)	1,063	30.4	30.4	23.5	37.8
	Fall (September 2027–November 2027)	1,063	30.4	30.4	23.5	37.8
Scope	Multi-state, non-adjacent	1,416	26.3	26.3	20.3	32.7
	Multi-state, adjacent	1,417	26.3	26.3	20.3	32.7
	Single state	1,417	26.3	26.3	20.3	32.7
Total		4,250	15.2	15.2	11.7	18.9

¹Arizona, California, Colorado, Hawaii, Oregon, Utah, Washington, Wyoming

²Florida, Georgia, Kentucky, Mississippi, North Carolina, Oklahoma, South Carolina, Texas

³Illinois, Minnesota, Missouri, Nebraska, Ohio, Wisconsin

⁴Connecticut, Maryland, Massachusetts, New Jersey, New York, Pennsylvania, Vermont, Virginia

Appendix C: Response rates

Table C.1. Completion counts and rates for Phase I of previous NAHMS Equine and other studies.

Study	Modes	Sample	Complete	% Complete
NAHMS Equine 1998	In-person	4,148	2,771	67.4
NAHMS Equine 2005	In-person	4,002	2,874	71.8
NAHMS Equine 2005 – Events	Phone, in-person	367	252	68.7
NAHMS Equine 2015	In-person	3,997	1,920	48.0
NAHMS Goat 2019	In-person	1,840	4,770	38.6
NAHMS Feedlot 2021	Mail, web, phone	1,025	5,342	19.2
NAHMS Swine 2021 Small Enterprise	Mail, web, phone	1,494	5,880	25.4
NAHMS Swine 2021 Large Enterprise	Mail, web, phone	585	2,380	24.6
NAHMS Bison 2022	Mail, web, phone	460	2,054	22.4

Table C.2. Completion counts and rates for biologics phases of previous NAHMS Equine and other studies.

Study	Sample	Complete	% Complete
NAHMS Equine 2015 – Blood	329	231	70.2
NAHMS Equine 2015 – Fecal pathogen	329	199	60.5
NAHMS Equine 2015 – Parasites fecal egg count	380	210	55.3
NAHMS Equine 2015 – Parasites resistance	210	80	38.1
NAHMS Equine 2015 – Tick	329	228	69.3
NAHMS Goat 2019 – Blood and swab	779	581	74.6
NAHMS Goat 2019 – Fecal pathogen	779	188	24.1
NAHMS Goat 2019 – Parasites fecal egg count	779	627	80.5
NAHMS Goat 2019 – Parasites resistance	627	206	32.9

Appendix D: Burden estimates

Table D.1. Average response burden estimates for Phase I questionnaire completion from previous NAHMS Equine and other studies (in minutes).

Study	Modes	Burden (min)	Pages
NAHMS Equine 1998	In-person	56	28
NAHMS Equine 2005	In-person	44	18
NAHMS Equine 2015	In-person	58	20
NAHMS Goat 2019	In-person	115	36
NAHMS Feedlot 2021	Mail, web, phone	58	16
NAHMS Swine 2021 Small Enterprise	Mail, web, phone	60	16
NAHMS Swine 2021 Large Enterprise	Mail, web, phone	60	20
NAHMS Bison 2022	Mail, web, phone	53	24

Appendix E: Phase II events list frame resources

For Phase II of the study, a list frame of equine events occurring from January 2027 through December 2027 will be constructed using the resources listed below. The list frame will be in Excel or similar software and contain the event name, State, date, and contact information for events. From the list, a stratified random sample of events will be selected, with strata defined by state, event scope, and season.

The difficulties in creating a comprehensive list of equine events in the United States stem from the vastness and variety of the equine industry. The industry is fragmented, with numerous organizations, associations, and independent event organizers at various levels, each with their own methods of event promotion. The fluid nature of the industry, with events emerging, changing, or being canceled, coupled with the prevalence of private events, further complicates the task.

The following list, organized by national, regional, and State levels, prioritizes events with a verifiable online presence or contact information, including associated websites where available; as well as events that showed dates for 2024.

The following resources might be helpful in finding information about equine events in Native American communities:

1. **Tribal Websites:** Many Tribes have their own websites or social media pages where they may list events, including rodeos, horse races, or cultural celebrations featuring horses. It's best to search directly for the specific Tribe you're interested in.
 1. **Indian Relay Racing** <https://www.sbtribes.com/relay-racing/>
2. **Professional Indian Horse Racing Association (PIHRA)**
<https://www.facebook.com/p/Professional-Indian-Horse-Racing-Association-100083103622491/>
3. **Social Media:** Following Native American organizations, communities, and individuals involved in equestrian activities on social media (Facebook, Instagram, etc.) is a great way to stay updated on events.
4. **Local News Outlets:** Many local news sources in areas with large Native populations often cover equine events happening in their communities. Check online news sites or newspapers from specific regions.
5. **Word of Mouth:** Reach out to people in Native communities or those involved in equine activities to inquire about upcoming events. Local tack shops, feed stores, or equestrian centers near reservations may also have information.

Here are some additional resources that might be helpful:

- **Indian Rodeo News:** A magazine that covers Native American rodeo events and culture. While they don't have a comprehensive online calendar, their articles often mention upcoming events.
- **Chief Joseph Ranch:** A working ranch in Montana owned by the Confederated Salish and Kootenai Tribes; they sometimes host equine events.

Please note: Finding information on equine events in Native American Nations might require some additional research and networking due to the decentralized nature of these communities. It's a good idea to start with broad searches and then narrow them down based on the specific Tribe or region you're interested in.

Additional Online Resources

- **US Equestrian (USEF):** The official governing body for equestrian sports in the United States. Their website includes a comprehensive calendar of events across various disciplines. (<https://www.usef.org/compete/competition-calendar>)
- **The Plaid Horse Magazine:** A leading publication for the hunter/jumper community, they have an extensive events calendar and trade show listing. (<https://www.theplaidhorse.com/expo/>)
- **Equine Network:** Home to several equine publications (including Practical Horseman and Horse Illustrated), they offer a calendar of events and clinics. (<https://www.equinenetwork.com/event>)
- **American Horse Council:** Represents the equine industry in Washington, D.C. They sometimes list major events or conferences on their website. (<https://www.horsecouncil.org/>)
- **The Chronicle of the Horse:** A long-standing publication for the horse world, it features an events calendar and classifieds section. (<https://www.chronofhorse.com/events/>)
- **Horse Show Tracker:** Allows you to search for specific shows and track your entries. (<https://www.horseshowtracker.com/>)
- **Equine Sports Council:** A horse show sanctioning corporation, similar to USEF (<https://equinesportscouncil.org/>)

Facebook Groups:

- **Equine Events USA:** A general group for sharing information about events across the country.
- **Horse Show Hub:** Focuses on hunter/jumper shows but often includes other disciplines.
- **Eventing USA:** Specifically for eventing enthusiasts and professionals.
- **Dressage Riders of America:** A large community of dressage riders sharing events and training tips.
- **Horse Training Tips & Tricks:** General horse training discussions, often including event announcements.
- **[Your State/Region] Horse Community:** Many States and regions have their own Facebook groups for local events and training opportunities.

Instagram Hashtags:

- **#equinetraining:** A broad hashtag for all things horse training.
- **#horsetraining:** Similar to #equinetraining, but can be more focused on specific disciplines.
- **#horseshow:** For general horse show announcements and photos.
- **#equestrianevents:** Similar to #horseshow, but often includes clinics and other events.
- **#equestrianlife:** A general hashtag for all things equestrian, including events and training.

Other Platforms:

- **Reddit:** Subreddits like r/Horses and r/Equestrian can be good resources for finding information about events and training opportunities.
- **Discord:** Some equestrian communities have Discord servers where they share information about events and training.

Additional Tips:

- **Search for Specific Disciplines:** If you're interested in a specific discipline (e.g., dressage, eventing, western riding), search for groups and hashtags specific to that discipline.
- **Join Local Groups:** Joining groups specific to your State or region can be a great way to find local events and training opportunities.
- **Follow Professionals:** Follow trainers, riders, and organizations on social media. They often share information about upcoming events and clinics.

National

- National Snaffle Bit Association (NSBA), <https://www.nsba.com/>
- National Reined Cow Horse Association (NRCHA), <https://www.nrcha.com/>
- National Reining Horse Association (NRHA), <https://nrha.com/>
- National Versatility Ranch Horse Association (NVRHA), <https://www.nvrha.org/>
- National Barrel Horse Association (NBHA), <https://nbha.com/>
- Professional Cowboys Rodeo Association, <https://www.prorodeo.com/nfr>
- National Senior Pro Rodeo Association, <https://nationalsenior.rodeo/>,
<https://www.facebook.com/NationalSeniorProRodeo/>
- International Professional Rodeo Association <https://www.ipra-rodeo.com/>
- National Spotted Saddle Horse Association Inc. <https://nssha.com/>
- Spotted Saddle Horse Breeders and Exhibitors Association <https://www.sshbea.org/>
- Western Dressage Association of America <https://www.westerndressageassociation.org/>
- HITS Hunter, Jumper, and Dressage Horse Shows <https://www.hitsshows.com/>
- Women's Professional Rodeo Association <https://www.wpra.com/>
- Professional Armed Forces Rodeo Association <https://www.rodeopafra.com/>
- Intercollegiate Horse Shows Association (IHSA) <https://www.ihsainc.com/>
- [Arabian Horse Association \(AHA\) arabianhorses.org](http://arabianhorses.org)
- [USEA https://useventing.com/events-competitions/calendar](https://useventing.com/events-competitions/calendar)
- [American Endurance Ride https://aerc.org/calendar/](https://aerc.org/calendar/)
- [American Ranch Horse Association https://americanranchhorse.net/](https://americanranchhorse.net/)
- [Draft horses https://drafhorsejournal.com/pages/advertise](https://drafhorsejournal.com/pages/advertise)
- <https://naclassicseries.com/show-list/>
- [American Paint Horse Association https://apha.com/](https://apha.com/)
<https://www.aphaonline.org/APHAOnline/pub/CalendarOfEvents.aspx>
- [American Quarter Horse Association https://www.aqha.com/](https://www.aqha.com/)
- [National Thoroughbred Racing Association https://www.ntra.com/](https://www.ntra.com/)
- [Thoroughbred Owners and Breeders Association https://toba.org/](https://toba.org/)
- [United States Dressage Federation https://www.usdf.org/calendar/competitions.asp](https://www.usdf.org/calendar/competitions.asp)

- FEI – <https://www.fei.org/events>
- US Hunter Jumper <https://www.ushja.org/> see competition tab for the events

Breed Associations

- American Warmblood
- American Warmblood Registry
www.americanwarmblood.com
- American Warmblood Society
www.americanwarmblood.org
- Andalusian
- International Andalusian Lusitano Horse Association
www.ialha.org
- Appaloosa
- Appaloosa Horse Club
www.appaloosa.com
- International Colored Appaloosa Association
www.icaainc.com
- Arabian
- Arabian Horse Association
www.arabianhorses.org
- North American Shagya-Arabian Society
www.shagya.net
- The Pyramid Society
www.pyramidsociety.org
- Azteca
- American Azteca Horse International Association
www.americanazteca.com
- Belgian Warmblood
- Belgian Warmblood Breeding Association/North American District
www.belgianwarmblood.com
- Buckskin
- American Buckskin Registry Association
www.americanbuckskin.org
- International Buckskin Horse Association
www.ibha.net
- Canadian Warmblood
- Canadian Warmblood Horse Breeders Association
www.canadianwarmbloods.com
- Caspian
- Caspian Horse Society of the Americas
www.caspian.org
- Champagne Horse
- International Champagne Horse Registry
www.ichregistry.com
- Cleveland Bay

- Cleveland Bay Horse Society of North America
www.clevelandbay.org
- Clydesdale
- Clydesdale Breeders of the USA
www.clydesusa.com
- Colorado Ranger
- Colorado Ranger Horse Association
www.coloradoranger.com
- Connemara Pony
- American Connemara Pony Society
www.acps.org
- Cream Draft
- American Cream Draft Horse Association
www.acdha.org
- Curly Horse
- American Bashkir Curly Registry
www.abcregistry.org
- International Curly Horse Organization/North American Curly Horse Registry
www.curlyhorses.org
- Curly Sporthorse International
www.curlysporthorse.org
- Dales
- Dales Pony Association of North America
www.dalesponies.com
- Dartmoor
- The Dartmoor Pony Registry of America
www.dartmoorpony.com
- Donkeys and Mules
- American Donkey and Mule Society
www.lovelongears.com
- Miniature Donkey and Mules
- American Donkey Association
- <https://www.americandonkeys.com/shows-events>
- American Mammoth Jackstock Registry
americanjackstock.org
- Dutch Warmblood
- Dutch Warmblood Studbook in North America
kwpn-na.org
- Fell Pony
- Fell Pony Society of North America
www.fpsna.org
- Fjord
- Norwegian Fjord Horse Registry
www.nfhr.com
- Florida Cracker

- Florida Cracker Horse Association
www.floridacrackerhorseassociation.com
- Friesian
- Friesian Horse Association of North America
www.fhana.com
- International Friesian Show Horse Association
www.friesianshowhorse.com
- Georgian Grande
- International Georgian Grande Horse Registry
www.georgiangrande.com
- Gypsy Horse
- Gypsy Cob & Drum Horse Association
www.gcdha.com
- Gypsy Horse Registry of America
www.gypsyhorseregistryofamerica.org
- Gypsy Vanner Horse Society
vanners.org
- Hackney
- American Hackney Horse Society
www.hackneysociety.com
- Haflinger
- American Haflinger Registry
www.haflingerhorse.com
- Hanoverian
- American Hanoverian Society
www.hanoverian.org
- Holsteiner
- American Holsteiner Horse Association
www.holsteiner.com
- Horse of the Americas
- Horse of the Americas Registry
www.horseoftheamericas.com
- Hungarian Horse
- Hungarian Horse Association of America
www.hungarianhorses.org
- Icelandic Horse
- United States Icelandic Horse Congress
www.icelandics.org
- Irish Draught
- Irish Draught Horse Society, N.A.
www.irishdraught.com
- Lipizzan
- Lipizzan Association of North America
www.lipizzan.org
- United States Lipizzan Registry
uslipizzan.org

- Lusitano
- International Andalusian Lusitano Horse Association
www.ialha.org
- Mangalarga Marchador
- US Mangalarga Marchador Association
namarchador.org
- Miniature Horse
- American Miniature Horse Association
www.amha.org
- American Miniature Horse Registry/American Shetland Pony Club
www.shetlandminiature.com
- Missouri Fox Trotter
- Missouri Fox Trotting Horse Breed Association
www.mfthba.com
- Morab
- Purebred Morab Horse Association/Purebred Morab Horse Registry
www.puremorab.com
- Morgan
- American Morgan Horse Association
www.morganhorse.com
- Morgan Sport Horse Breeders Ltd.
www.sportmorgan.com
- Lippitt Morgan Breeders' Association
www.lippitmorganbreedersassociation.com
- Morgan Single-Footing Horse Association
www.gaitedmorgans.org
- Mustang
- BLM National Wild Horse and Burro Program
www.blm.gov/adoptahorse
- Kiger Mesteño Association
www.kigermustangs.org
- American Mustang and Burro Association Inc.
www.ambainc.net
- Spanish Mustang Registry Inc.
www.spanishmustang.org
- National Show Horse
- National Show Horse Registry
www.nshregistry.org
- New Forest Pony
- New Forest Pony Association & Registry
www.newforestpony.com
- Oldenburg
- Oldenburg Horse Breeders Society
www.oldenburghorse.net
- International Sporthorse Registry and Oldenburg Registry, N.A.
www.isroldenburg.org

- Paint
- American Paint Horse Association
www.apha.com
- Palomino
- Palomino Horse Association
www.palominohorseassoc.com
- Palomino Horse Breeders of America
www.palominohba.com
- Paso Fino
- Paso Fino Horse Association
www.pfha.org
- Percheron
- Percheron Horse Association of America
www.percheronhorse.org
- Peruvian Horse
- North American Peruvian Horse Association
www.napha.net
- Pinto
- Pinto Horse Association of America Inc.
www.pinto.org
- Pony of the Americas
- Pony of the Americas Club
www.poac.org
- Przewalski Horse
- Foundation for the Preservation and Protection of the Przewalski Horse
www.treemail.nl/takh
- Quarter Horse
- American Quarter Horse Association
www.aqha.com
- Foundation Quarter Horse Registry
www.fqhrregistry.com
- National Foundation Quarter Horse Association
www.nfqha.com
- National Quarter Horse Registry
www.nqhr.com
- American Appendix Horse Association
www.americanappendix.com
- American Quarter Pony Association
www.aqpa.com
- Racking Horse
- Racking Horse Breeders' Association of America
www.rackinghorse.com
- Rocky Mountain Horse
- Mountain Pleasure Horse Association
www.mtn-pleasure-horse.org

- Rocky Mountain Horse Association
www.rmhorse.com
- Saddlebred
- American Saddlebred Horse Association
www.saddlebred.com
- Selle Français
- les Haras Nationaux
www.ifce.fr/haras-nationaux
- Shire
- American Shire Horse Association
www.shirehorse.org
- Spanish Barb
- Spanish Barb Breeders Association
www.spanishbarb.com
- Spanish Norman
- Spanish-Norman Horse Registry
www.spanish-norman.com
- Sport Horse
- International Sport Horses of Color
www.shoc.org
- Performance Horse Registry
usef.org
- Spotted Saddle Horse
- National Spotted Saddle Horse Association
www.nssha.com
- Spotted Saddle Horse Breeders and Exhibitors Association
www.sshbea.org
- Standardbred
- United States Trotting Association
www.ustrotting.com
- Suffolk
- American Suffolk Horse Association
www.suffolkpunch.com
- Swedish Warmblood
- Swedish Warmblood Association of North America
www.swanaoffice.org
- Tennessee Walking Horse
- Tennessee Walking Horse Breeders' and Exhibitors' Association
www.twhbea.com
- Friends of Sound Horses
www.fosh.info
- Walking Horse Owners' Association
www.walkinghorseowners.com
- Walkaloosa Horse Association
www.walkaloosaregistry.com
- Thoroughbred

- The Jockey Club
www.jockeyclub.com
- Trakehner
- American Trakehner Association
www.americantrakehner.com
- Welsh Pony and Cob
- Welsh Pony and Cob Society
www.welshpony.org
- Be sure to look for donkey, mule, pony, and hinny events as well

Regional

- Pacific Northwest Morgan Horse show,
<http://www.pacificnorthwestmorganhorseshow.com/>
- The Northwest Professional Rodeo Association (OR, WA, ID, NV, CA),
<https://nprarodeo.com>
- The Tevis Cup, Utah and California, <https://teviscup.org/>
- Northern Rodeo Association, <https://www.northernrodeo.com/>
- Urban Equine Events & Midstates Horse Show (NE, IA),
<https://www.urbanequineevents.com/>
- New England Dressage Association, <https://neda.org/>
- Fieldstone Park (New England), <https://www.fieldstoneshowpark.com/>
- Carolina Carriage Club, <https://carolinacarriageclub.com/>
- Southern Rodeo Association, <https://srarodeo.com/>
- Western Carolinas Arabian Horse Association, <https://www.wcaha.org/>
- Magnolia Arabian Horse Association, <https://magnoliaaha.com/>
- Virginia Carolinas Morgan Horse Club, <https://vcmhc.org/>
- Southern Rodeo Company, <https://www.southernrodeocompany.com/>,
<https://www.facebook.com/SouthernRodeoCompany/>
- Central States Dressage and Eventing Association, <https://www.csdea.org/>
- Great Lakes Pro Rodeo Circuit, <https://www.glcprorodeo.org/>
- First Frontier Rodeo Circuit, <https://firstfrontiercircuit.com/>

States

WA (Washington)

- Washington State Horsemen, (WSH), <https://www.wsh.org/>
- Washington State Horse Park, <https://www.wahorsepark.org/home>
- Washington State Quarter Horse Association, <https://www.wsqha.com/>
- Cascade Horse Shows, <https://www.cascadehorseshow.com/>
- Central Washington Dressage Society, <https://centralwashingtondressage.org/>
- Washington State Hunter Jumper Association, <https://www.wshja.org/>
- Arabian Heritage Horse Show, <https://www.heritagearabhorse.org>

- Washington State Horse Events Facebook Group, <https://www.facebook.com/groups/378646738874409/>
- Evergreen State Fairgrounds Equestrian Park, Monroe WA, <https://www.evergreenfair.org/>
- Washington International Horse Show, <https://wihs.org/>

OR (Oregon)

- Oregon Family Equestrian Activities (OFEA), <https://www.oregonfamilyequestrian.org/show-calendar>
- Oregon Thoroughbred Owners and Breeders Association, <http://www.oregontoba.com/breederownereducation/historicalmagazines.html>
- Oregon Quarter Horse Association, <https://oregonqha.com/>
- Oregon Morgan Horse Association, <https://www.morganhorseoregon.com/>
- Oregon Dressage Society, <https://oregondressage.com/home/>
- Oregon Equestrian Trails, <https://www.oregonequestriantrails.org/>
- Oregon High Desert Classics, <https://www.oregonhighdesertclassics.org/>
- Oregon State Fair Horse Shows, <https://oregonstatefair.org/livestock/horse-shows/>
- Sisters Rodeo, <https://sistersrodeo.com/>
- Deschutes County Fair & Expo, <https://expo.deschutes.org/events/equestrian>
- Crooked River Roundup, <https://crookedriverroundup.com/>
- Pendleton Roundup, <https://www.pendletonroundup.com/>,
<https://www.facebook.com/pendletonroundup/>
- St. Paul Rodeo, <https://www.stpaulrodeo.com/>
- Arabian and Half Arabian Club of Oregon, <https://ahaco.com/>
- The Oregon Horse Center, <https://www.oregonhorsecenter.com/>
- Oregon Pinto Horse Association, <https://www.oregonpinto.com/>,
<https://www.facebook.com/oregonpinto/>
- Oregon Horse Council, <https://www.oregonhorsecouncil.com/>

CA (California)

- Pacific Coast Horse Shows Association (PCHA), <https://pchashows.com/>,
<https://www.facebook.com/pchorseshows/>
- California Professional Horsemen's Association (CPHA), <https://www.cpha.org/>
- Blenheim Equisports, <https://theplacetojump.com/>
- California Dressage Society (CDS), <https://www.california-dressage.org/>
- Desert International Horse Park, <https://deserthorsepark.com/>
- Del Mar Horsepark, <https://www.hitsshows.com/>
- Del Mar National Horse Show, <https://www.facebook.com/delmarnational/>
- Sacramento International Horse Show,
<https://www.facebook.com/sacinternationalhorseshow/>
- West Palms Events, <https://www.westpalmsevents.com/>
- Lost Angeles Equestrian Center, <https://thelaec.com/>,
<https://www.facebook.com/LosAngelesEquestrianCenter>
- The Horse Park and Woodside, <https://www.horsepark.org/>

- California State Horsemen Association, <https://californiastatehorsemen.org/>
- California Thoroughbred Breeders Association, <https://ctba.com/>
- California Reined Cow Horse Association, <https://californiacowhorse.com/>
- Arabian Horse Association of Northern California, <http://ahanc.com/>
- Paso Doble Horse Park, <https://pasorobleshorsepark.com/>
- Southern California Horsemen's Council, <https://schhorseshows.com/>
- California Cowboys Professional Rodeo Association, <https://www.ccpra.com/>

AZ (Arizona)

- Arizona Horse Council, <https://azhorsecouncil.org/>
- Arizona Quarter Horse Association, [<https://www.azqha.org/>
- Arizona Thoroughbred Breeders Association, <https://atba.net/>
- Arizona Hunter Jumper Association, <https://www.ahja.org/>
- Arizona Cutting Horse Association, <https://www.azcha.com/>
- Arizona Reining Horse Association, <https://azrha.com/>
- Arabian Horse Association of Arizona, <https://www.scottsdaleshow.com/>
- Arizona Sun Circuit, <https://www.suncircuit.com/>
- Arizona National Livestock Show, <https://www.anls.org/>,
<https://www.facebook.com/arizonanational/>
- WestWorld of Scottsdale, <https://www.westworldaz.com/>
- Arizona Fall Championship, <https://azfallchampionship.com/>,
<https://www.facebook.com/azfallchampionship/>
- Pima County Fair, <https://pimacountyfair.com/horse-shows/>
- Arizona Dressage Association, <https://azdressage.org/>
- Arizona Morgan Horse Association, <http://www.arizonamorgan.com/>
- Arizona Paint Horse Club, <https://azpaints.org/>, <https://www.facebook.com/p/Arizona-Paint-Horse-Club-100064556149785/>
- Arizona Appaloosa Association, <https://www.arizonaappaloosa.com/>
- Grand Canyon Professional Rodeo Association, <http://gcpra.net/>

UT (Utah)

- Utah Quarter Horse Association, <https://www.uqha.com/show-schedule>
- Utah Dressage Society, <https://www.utahdressagesociety.com/>
- Utah Arabian Horse Club, <https://utaharabians.com/>,
<https://www.facebook.com/UtahArabianHorseClubUAHC/>
- Utah State Western Riding Club Association, <https://uswrca.com/events>
- Intermountain Reining Horse Association, <https://www.irha.com/show-information>,
<https://www.facebook.com/intermountainreininghorseassociation>
- Utah Barrel Racing Association, <https://www.utbra.com/>
- Utah Summer Games, <https://utahsummergames.org/>
- Days of '47 Rodeo, <https://www.daysof47.com/>
- Utah State Fair, <https://www.utahstatefair.com/>
- Ogden Pioneer Days Rodeo, <https://www.ogdenpioneerdays.com/>

- Box Elder County Fair Draft Horse Show and Golden Spike Rodeo, <https://www.boxeldercountyut.gov/tourism/page/whats-happening-box-elder-county>

CO (Colorado)

- Colorado Horse Council, <https://coloradohorsecouncil.com/>
- Colorado Hunter Jumper Association (CHJA), <https://chja.org/>
- Colorado Ranger Horse Association, <http://www.coloradoranger.com/>
- Colorado Quarter Horse Association, <https://ncqha.org/>
- Rocky Mountain Dressage Society, <https://www.rmds.org/>
- Colorado Reined Cow Horse Association, <https://www.facebook.com/ColoradoReinedCowhorseAssociation/>
- Rocky Mountain Horse Show Association, <https://www.showmetheribbons.org/>
- National Western Stock Show, <https://nationalwestern.com/>
- Colorado Pro Rodeo, <https://www.coloradoprrodeo.com/index.php/schedule>
- Bally's 2019s Arapahoe Park Horse Track, <https://casinos.ballys.com/arapahoe-park/>

MT (Montana)

- Montana Quarter Horse Association, <https://montanaqha.com/>
- Montana Arabian Horse Association, <http://www.montanaarabianhorses.com/>
- Montana Reining Horse Association, <https://www.montanareining.com/>
- The Event at Rebecca Farm, <https://www.rebeccafarm.org/>
- Montana Cutting Horse Association, <https://montanacha.com/>
- Montana Fair, <https://www.montanafair.com/>
- Big Sky Draft Horse Expo, <https://drafthorseexpo.com/>

WY (Wyoming)

- Wyoming Quarter Horse Association, <https://wqha.org/>
- Wyoming Cutting Horse Association, <https://wyomingcha.org/>
- Wyoming All Breeds Racing Association, <https://wabra.org/>
- Wyoming Rodeo Association, <https://www.wyorodeoassociation.com/>
- Cheyenne Frontier Days, <https://www.cfdrodeo.com/>
- Cody Nite Rodeo, <https://www.codystampederodeo.com/>

NE (Nebraska)

- Nebraska Quarter Horse Association, <https://www.nebraskaquarterhorseassociation.com/>
- Nebraska Dressage Association, <https://nebraskadressage.org/>
- Central Plains Reining Horse Association, <http://www.cprha.com/>
- Nebraska State Fair Equine Shows, <https://www.statefair.org/ag-competitions/equine-exhibitors/>, [<https://www.facebook.com/nestatefairhorse/>](<https://www.omahaequine.com/>)
- Nebraska Horse Clubs Association, <https://nebraskahorseclubs.weebly.com/>, <https://www.facebook.com/nebraskahorseclubs/>

- Nebraska State Rodeo Association, <https://nebraskastaterodeo.com/>,
<https://www.facebook.com/NebraskaStateRodeoAssociation/>

TX (Texas)

- Texas Quarter Horse Association, <https://www.tqha.com/>
- Texas Thoroughbred Association, <https://texasthoroughbred.com/>
- Arabian Horse Association of Texas, <https://arabianhorsecluboftexas.com/>
- Texas Hunter Jumper Association, <https://www.thja.org/>
- Texas Reining Horse Association, <https://www.texasreining.com/>
- Houston Livestock Show and Rodeo, <https://www.rodeohouston.com/>
- Fort Worth Stock Show & Rodeo, <https://www.fwssr.com/>
- Texas Rose Horse Park Events, <https://www.texasrosehorsepark.com/>
- Great Southwest Equestrian Center Events, <https://gswec.com/>
- Arabian Racing Series, <https://www.texasarabianbreedersassociation.com/>
- Texas Pro Rodeo Circuit, <https://texasprorodeocircuit.com/>
- Texas Senior Pro Rodeo Association, <https://www.tspra.com/>
<https://www.facebook.com/p/Texas-Senior-Pro-Rodeo-Assoc-TSPRA-100064430299763/>
- Mustang Heritage Foundation <https://mustangheritagefoundation.org/>

OK (Oklahoma)

- Oklahoma Quarter Horse Association, <https://www.oqha.com/>
- Oklahoma Reining Horse Association, <https://www.okrha.com/>
- Oklahoma Hunter Jumper Association, <https://www.okhunterjumper.com/>
- Oklahoma State Fair Horse Shows, <https://okstatefair.com/competitions/equine/>
- Lazy E Arena Events, <https://lazye.com/>
- Oklahoma Rodeo Association, <https://www.facebook.com/p/Oklahoma-Rodeo-Association-100064455529197/>
- Travel Oklahoma, <https://www.travelok.com/rodeos>
- Thoroughbred Racing Association of Oklahoma, (TRAO) <https://traoracing.com/>,
<https://www.facebook.com/Traoracing/>
- Paint Horse Club of Oklahoma, <https://www.okpainthorse.org/>
- Oklahoma Arabian Horse Club, <https://www.oklahomaaarabians.com/events>

MO (Missouri)

- Missouri Horse Council, <https://missourihorsecouncil.com/>
- Missouri Fox Trotting Horse Breed Association (MFTHBA), <https://mfthba.com/>
- Missouri Quarter Horse Association (MoQHA), <https://www.moqha.com/>
- Missouri Hunter Jumper Organization, <http://www.mohjo.org/>
<https://www.facebook.com/p/Missouri-Hunter-Jumper-Organization-MOHJO-100057050456992/>
- Missouri Horse Shows, <http://www.mohorseshows.com/index.shtml>
- Southwest Missouri Reining Horse Association,
<https://www.facebook.com/SouthwestMissouriReiningHorseAssociation/>

- American Royal, <https://americanroyal.com/>
- Missouri Rodeo Cowboy Association, <http://missourirodeo.com/>,
<https://www.facebook.com/p/Missouri-Rodeo-Cowboy-Assoc-100064932784283/>
- Missouri Family Rodeo Association, <https://missourifamilyrodeo.com/>
- Ozark Quarter Horse Association, <https://www.ozqha.com/> ,
<https://www.facebook.com/ozqha/>

MA (Massachusetts)

- Massachusetts Horsemen's Council, <https://www.mahorsecouncil.com/>
- Massachusetts Morgan Horse Association, <https://www.massmorgan.com/>
- Massachusetts Quarter Horse Association, <https://massqha.com/>
(<https://www.facebook.com/p/Massachusetts-Quarter-Horse-Association-100063544301936/>)
- North Shore Horsemen Association, (<https://www.nshorsemens.org/>
<https://www.facebook.com/profile.php?id=100064651723107>)
- Myopia Horse Show, <https://www.myopiahuntclub.com/>

NJ (New Jersey)

- Standardbred Breeders & Owners Association of New Jersey, <https://sboanj.com/>
- American Saddlebred Association of New Jersey, <https://www.ashanj.net/>
- New Jersey Pinto Horse Association, <https://njptha.net/> ,
<https://www.facebook.com/groups/649051848780800/>
- New Jersey Horse Shows Association (NJHSA), <https://www.njhsa.org/>
- New Jersey Professional Horsemen's Association, <https://njpha.net/>
- New Jersey Equine Advisory Board, <https://www.esdcta.org/>
- Monmouth Park, <https://www.monmouthpark.com/>
- Freehold Raceway, <http://www.freeholdraceway.com/>
- Meadowlands Racing and Entertainment, <https://playmeadowlands.com/>
- Garden State Horse Show, <https://www.gardenstatehorseshow.org/>
- Sussex County Farm and Horse Show, <https://sussexcountyfairgrounds.org/>

NC (North Carolina)

- North Carolina Horse Council, <https://www.nchorsecouncil.com/>
- Tryon International Equestrian Center, <https://tryon.com/>
- Carolina Horse Park, <https://www.carolinahorsepark.com/>
- North Carolina Quarter Horse Association, <https://ncqha.com/>
- North Carolina Thoroughbred Association, <https://ncta.com/>
- North Carolina Hunter Jumper Association, <https://www.nchja.com/>
- North Carolina Dressage and Combined Training Association
- Carolina International (CIC), <https://carolinainternationalcci.com/>,
<https://www.facebook.com/CarolinaInternationalCCI/>

SC (South Carolina)

- South Carolina Horse Council, <https://www.schorseouncil.com/>
- South Carolina Quarter Horse Association, <https://scquarterhorse.com/>
- South Carolina Thoroughbred Owners and Breeders Association, <http://www.sctoba.org/>
- South Carolina Hunter Jumper Association, <http://www.schja.org/>
- Back Country Horsemen of South Carolina, <https://sites.google.com/view/bchsc/home>,
<https://www.facebook.com/BCHofSC/>
- Aiken Horse Park, <https://www.aikenhorsepark.org/>
- South Carolina Equine Park, <https://www.scequinepark.com/>
- The Camden Cup, <https://carolinacup.org/>

GA (Georgia)

- Georgia Horse Council, <https://georgiahorsecouncil.com/>
- Georgia Dressage and Combined Training Association, <https://www.gdcta.org/>
- Georgia Quarter Horse Association, <https://gqha.com/>
<https://www.facebook.com/groups/154979441221798/>
- Georgia Appaloosa Horse Club, <https://www.georgia-appaloosa.com/>,
<https://www.facebook.com/georgiaappaloosa/>
- Georgia Arabian Horse Association, <https://www.georgia-arabian.com/>,
<https://www.facebook.com/GeorgiaArabianHorseAssociation/>
- Georgia Paso Fino Horse Association, <https://www.georgiapasofino.org/>
- Atlanta Steeplechase, <https://georgiasteepchase.org/>
- Georgia National Draft Horse Show,
<https://www.georgianationalfair.com/p/livestock/horseshows>
- Georgia Horse Park, <https://www.georgiahorsepark.com/>
- Georgia National Rodeo, <https://www.georgianationalrodeo.com/>

FL (Florida)

- Florida Quarter Horse Association, <https://www.fqha.net/>
- Florida Thoroughbred Breeders' and Owners' Association, <https://ftboa.com/>
- Florida Thoroughbred Horsemen's Association, <https://floridahorsemen.org/>
- Ocala Marion County, <https://www.ocalamarion.com/things-to-do/equestrian/>
- Arabian Horse Association of Florida, <https://www.ahaflorida.org/>
- Florida Pinto Horse Association, <http://www.fptha.com/www.fptha.com/Welcome.html>
- Central Florida Hunter Jumper Association, <http://www.cfhja.com/>,
<https://www.facebook.com/centralfloridahunterjumper/>
- South Florida Hunter Jumper Association, <http://www.sfhja.com/>,
<https://www.instagram.com/southfloridahunterjumper/>
- Southwest Florida Hunter Jumper Association, <https://www.swfhja.com/>
- South Florida Dressage Association, <https://southfloridadressageassociation.org/>
- Northeast Florida Dressage Association, <https://www.nfladressage.org/>,
<https://www.facebook.com/groups/93930087997/>

- Southwest Florida Dressage Association, <https://swfldressage.org/>,
<https://www.facebook.com/SWFLDressage/>
- First Coast Classical Dressage Society, <https://www.fccds.org/>
- Wellington International, <https://wellingtoninternational.com/>
- Live Oak International, <https://liveoakinternational.com/> ,
<https://www.facebook.com/LiveOakInternational/> ,
<https://www.instagram.com/liveoakinternational/?hl=en>

MN (Minnesota)

- Minnesota Horse Council, <https://www.mnhorsecouncil.org/>
- Minnesota Quarter Horse Association, <https://www.mnqha.com/>
- Minnesota Thoroughbred Association, <https://minnesotabred.com/>,
<https://www.facebook.com/minnesotathoroughbredassociation/>
- Minnesota Quarter Horse Racing Association, <https://mqhra.com/>
- Minnesota Cutting Horse Association, <https://mncuttinghorse.com/>
- Minnesota Hunter Jumper Association, <https://mhja.org/>
- Minnesota Western Saddle Club Association, <http://wsca.org/>
- Minnesota High School Equestrian Association, <https://www.mhsea.org/>
- Minnesota Horse Expo, <https://www.mnhorseexpo.org/>
- Minnesota Harvest Horse Show, <https://minnesotaharvesthorseshow.com/> (A popular hunter/jumper show held annually in September)
- Minnesota State Fair Horse Shows, <https://www.mnstatefair.org/competitions/horses/>
- Canterbury Park Horse Racing, <https://www.canterburypark.com/>
- Running Aces Harness Park, <https://runaces.com/racing/>
- Minnesota Rodeo Association, <https://www.mnrodeo.org/>

WI (Wisconsin)

- Wisconsin Horse Council (WHC), <https://www.wisconsinhorsecouncil.org/>
- Wisconsin Quarter Horse Association, <https://wqha.com/>
- Wisconsin Arabian Horse Association, <https://wisconsinarabian.com/shows-%26-events>
- Wisconsin Pinto Horse Association, <https://wisconsinpinto.com/>
- Wisconsin Morgan Horse Club, <https://www.wisconsinmorganhorseclub.org/event-calendar>
- Western Wisconsin Horse Show Association, <http://www.wwhsa.org/>
- Wisconsin 4-H Horse Association,
<https://4h.extension.wisc.edu/opportunities/projects/large-animals/horse-project/wisconsin-4-h-horse-association/>
- Wisconsin High School Rodeo Association, <https://whsra.org/> ,
<https://www.facebook.com/groups/2214226909/>
- Midwest Horse Fair, <https://midwesthorsefair.com/>
<https://www.facebook.com/midwesthorsefair>
- Wisconsin State Fair Horse Show, <https://wistatefair.com/competitions/open-livestock/>
- Wisconsin River Pro Rodeo, <https://wrpr.org/>

IL (Illinois)

- Horsemen's Council of Illinois, <https://hci.wildapricot.org/>
- Illinois Quarter Horse Association, <https://ilqha.com/>
- Illinois Thoroughbred Horsemen's Association, <https://www.itharacing.com/>
- Arabian Horse Association of Illinois, <https://www.facebook.com/illinoisaha/>
- Northern Illinois Arabian Horse Activity Club, <https://www.niahac.com/>
- Illinois Paint Horse Association, <http://www.illinoispainthorse.com/>
- Illinois Dressage and Combined Training Association, <https://idcta.org/>
- Illinois Hunter Jumper Association, <https://www.ihja.com/>
- Northern Illinois Hunter Jumper Association, <https://nihja.net/>
- Illinois High School Rodeo Association, <https://ilrodeo.com/>
- Illinois State Fair Equine Events, <https://statefair.illinois.gov/competitions/competitive-events/equine-events.html>
- Lamplight Equestrian Center Shows, <https://www.hitsshows.com/hits-venues/hits-chicago/>
- Great Northern Illinois Pro Rodeo and Bull Riding, <https://bigatrodeo.com/event/great-northern-illinois-pro-rodeo-in-belvidere-il/2024-09-07/>

KY (Kentucky)

- Kentucky Quarter Horse Association, <https://www.kyqha.com/>
- American Saddlebred Horse Association, <https://asha.net/>
- Kentucky Mountain Saddle Horse Association, <https://www.kmsaha.com/>
- Kentucky Horse Park Foundation, <https://kyhorsepark.com/>
- Kentucky Hunter Jumper Association, <http://www.khja.org/>
- Kentucky Dressage Association, <https://www.kentuckydressageassociation.com/>
- Kentucky Equine Education Project (KEEP), <https://horseswork.com/>
- Equine Breed Associations, <https://horseswork.com/equine-breed-associations/>
- Kentucky Derby, <https://www.kentuckyderby.com/>
- Land Rover Kentucky Three-Day Event, <https://www.kentuckythreedayevent.com/>
<https://www.facebook.com/KentuckyThreeDayEvent/>
- Breeders' Cup World Championships, <https://www.breederscup.com/>
- Kentucky Horse Park Events, <https://kyhorsepark.com/>
- Keeneland Race Course, <https://www.keeneland.com/>
- Churchill Downs, <https://www.churchilldowns.com/>
- Ellis Park, <https://ellisparkracing.com/>
- Turfway Park, <https://www.turfway.com/racing/live-racing-schedule/>

OH (Ohio)

- World Equestrian Center, <https://worldequestriancenter.com/wilmington-oh/>
- Ohio Harness Horsemen's Association, <https://www.ohha.com/Home>

PA (Pennsylvania)

- Pennsylvania Horse Breeders Association, <http://www.pabred.com/>
- Pennsylvania Quarter Horse Association, <http://www.pqha.org/>
- Pennsylvania Arabian Horse Association, <https://www.paha.org/>
- Pennsylvania National Horse Show, <https://panational.org/>
- Pennsylvania Horse Shows Association (PHSA), <https://www.pennhsa.org/>
- Pennsylvania National Horse Show, <https://panational.org/>
- Devon Horse Show & Country Fair, <https://www.devonhorseshow.net/>
- Radnor Hunt Races, <https://radnorhuntraces.org/>
- Plantation Field International Horse Trials & Country Fair, <https://www.plantationfield.com/> <https://www.facebook.com/PlantationFieldInternational/> <https://www.instagram.com/plantationfield/?hl=en>
- Ludwig's Corner Horse Show, <https://ludwigshorseshow.com/>
- Dressage at Devon, <https://dressageatdevon.org/>
- Pennsylvania High School Rodeo Association, <https://www.phsra.org/>

NY (New York)

- New York State Quarter Horse Association, <https://www.nysqha.com/>
- Western New York Dressage Association (WNYDA), <https://www.wnyda.org/>
- Hampton Classic Horse Show, <https://hamptonclassic.com/>
- Saratoga Race Course, <https://www.nyra.com/saratoga/>
- New York State Fair Horse Show, <https://nysfair.ny.gov/venue/toyota-coliseum/>
- HITS Hudson Valley, NY, <https://www.hitsshows.com/hits-venues/hits-hudson-valley/>
- Old Salem Farm Spring Horse Shows, <https://oldsalemfarm.net/>
- Lake Placid Horse and I Love NY Horse Shows <https://www.lakeplacid.com/events/lake-placid-horse-show>

VT (Vermont)

- Vermont Horse Council, <https://vthorsecouncil.org/>
- Vermont Morgan Horse Association, <https://vtmorganhorse.org/>
- Vermont Hunter Jumper Association, <https://www.vhja.org/>
- Central Vermont Dressage Association, <https://www.cvda.org/>
- Green Mountain Horse Association, <https://www.gmhainc.org/>
- Vermont Equine Riding and Driving Association (VERDA), <https://www.verda.org/>
- HITS Manchester, VT <https://www.hitsshows.com/hits-events/hits-vermont-summer-festival/> <https://www.facebook.com/VermontSummerFestival/>

CT (Connecticut)

- Connecticut Horse Council, <http://www.cthorsecouncil.org/>
- Connecticut Morgan Horse Association, <https://ctmorgans.org/>
- Connecticut Hunter Jumper Association, <https://www.chja.net/>
- Connecticut Dressage Association, <https://www.ctdressage.org/>
- Connecticut Color Breed Association, <https://connecticut-color-breed-association.mailchimpsites.com/>
- Ox Ridge Charity Horse Show, <https://www.oxridge.com/horse-shows.html>

VA (Virginia)

- Virginia Horse Council, <https://virginiahorsecouncil.org/>
- Virginia Thoroughbred Association, <https://virginiahorseracing.com/>
- Virginia Quarter Horse Association, <https://myvqha.com/>
- Virginia Arabian Horse Association, <https://www.vahaclub.com/index.html>
<https://www.facebook.com/vahaarabians/>
- Virginia Paint Horse Club, <https://www.virginiapainthorseclub.org/>
- Virginia Hunter Jumper Association, <https://vhja.org/>
- Virginia Dressage Association, <https://www.virginiadressage.org/>
- Virginia Horse Shows Association, <http://www.vhsa.com/>
- Virginia Horse Center Foundation, <https://vahorsecenter.org/>
- Virginia Gold Cup, <https://vagoldcup.com/>
- Upperville Colt & Horse Show, <https://upperville.com/>
- Keswick Horse Show, <https://www.keswickhorseshow.com/>
- The Middleburg Spring Races, <https://www.middleburgspringraces.com/>
<https://www.instagram.com/middleburgspringraces/?hl=en>