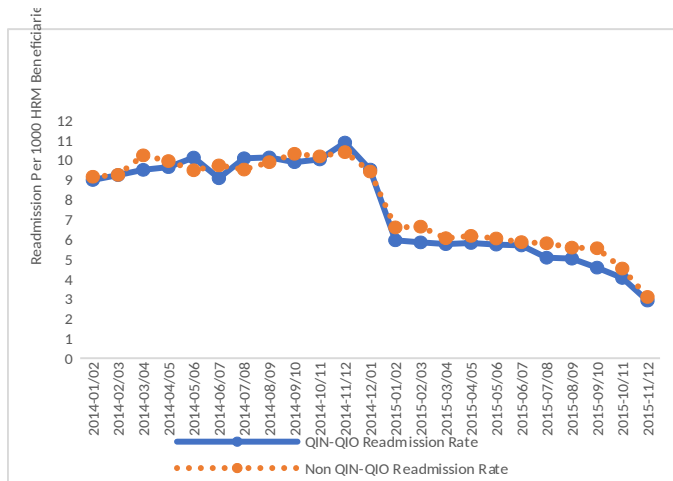


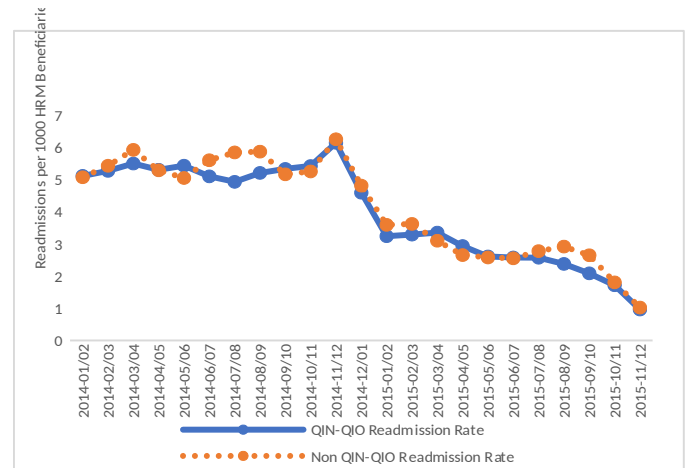
## CMS-10675 Attachment 2

### Readmission Rates for Medicare Beneficiaries Using High-Risk Medications (HRM) by Provider's Participation in the QIN-QIO Program to Prevent Adverse Drug Events: Results from Preliminary Analysis of Medicare Claims (QIN-QIO Implementation Begins January 2015)

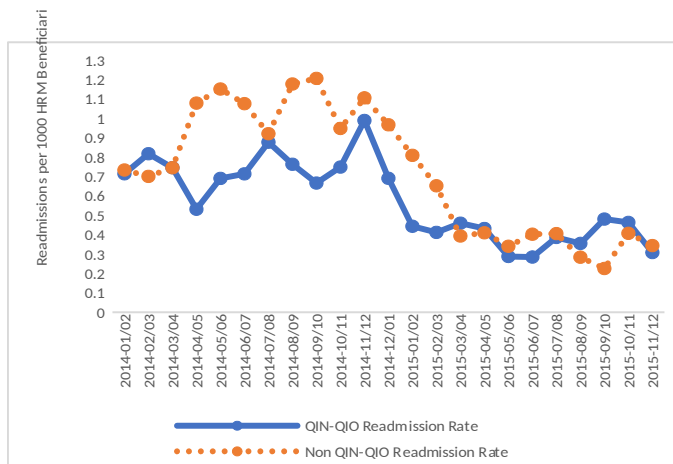
**Figure 1. All-Cause Readmissions, HRM Beneficiaries\***



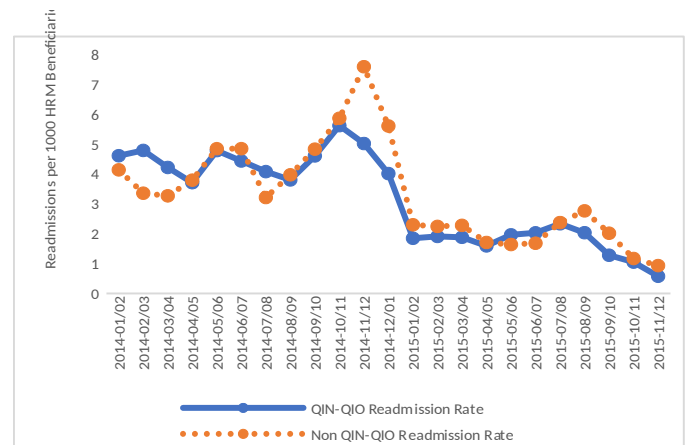
**Figure 2. Readmissions Related to Anticoagulants per 1,000 HRM Beneficiaries**



**Figure 3. Readmissions Related to Diabetes Agents per 1,000 HRM Beneficiaries**



**Figure 4. Readmissions Related to Opioids per 1,000 HRM Beneficiaries**



\* Readmissions due to any cause were reduced more for beneficiaries exposed to the QIN-QIO program compared to beneficiaries in the Non-QIN-QIO group by about 8% (OR = 0.92 [95% CI, 0.88-0.96] p <.0001). No statistically significant differences between groups were observed for readmission rates due to specific drug classes.