

**Form Approved**

**OMB No.: 0920-XXXX**

**Exp. Date: \_\_\_\_\_**

## **A POST-IMPLEMENTATION SURVEY FOR PARENTS**

### **“LEARN THE SIGNS. ACT EARLY.”**

Public reporting burden of this collection of information is estimated to average 10 minutes including the time for reviewing instructions, searching existing data sources, gathering and maintaining the data needed, and completing and reviewing the collection of information. An agency may not conduct or sponsor, and a person is not required to respond to a collection of information unless it displays a currently valid OMB control number. Send comments regarding this burden estimate or any other aspect of this collection of information, including suggestions for reducing this burden, to CDC/ATSDR Reports Clearance Officer; 1600 Clifton Road NE, MS D-74, Atlanta, Georgia 30333; ATTN: PRA (0920-XXXX).

## Post-implementation Parent Survey

Dear Parent,

Thank you for agreeing to complete this survey. Your answers are anonymous. Please do not put your name anywhere on the survey. Completing this survey is completely voluntary. You may skip any question that you do not feel comfortable answering.

1. **How many children 5 years old or younger do you have?** \_\_\_\_\_
  
2. **As of today, how old is your youngest child?** \_\_\_\_\_
  
3. **Did you attend [insert “Learn the Signs. Act Early.” Event] on [date] at [location]?**  
 Yes     No
  
4. **Have you heard of the “Learn the Signs. Act Early.” campaign?**  
 Yes                       No (If your answer is No, please go directly to Question 7)
  
5. **The “Learn the Signs. Act Early” campaign is about which one of the following topics?**  
*[select only one]*
  - Breast Cancer
  - Child Development
  - Stroke
  - HIV/AIDS
  - Type II Diabetes
  - Autism

**6. Where did you see/hear about the “Learn the Signs. Act Early.” campaign?**

*[select all that apply]*

- TV
- Radio
- Internet/Online
- Doctor’s Office
- My Child’s Teacher or Child care Provider
- Family Member/Friend
- [Insert relevant event/program, e.g., WIC office, library, community center, health fair]*
- Magazine
- Newspaper
- Advertising
- I don’t remember
- Other (Please specify \_\_\_\_\_)

**7. Have you seen or heard anything recently about developmental milestones (things to look for in your child to tell if he is on track for his age?)**

- Yes                       No (If No, please go directly to Question 9)

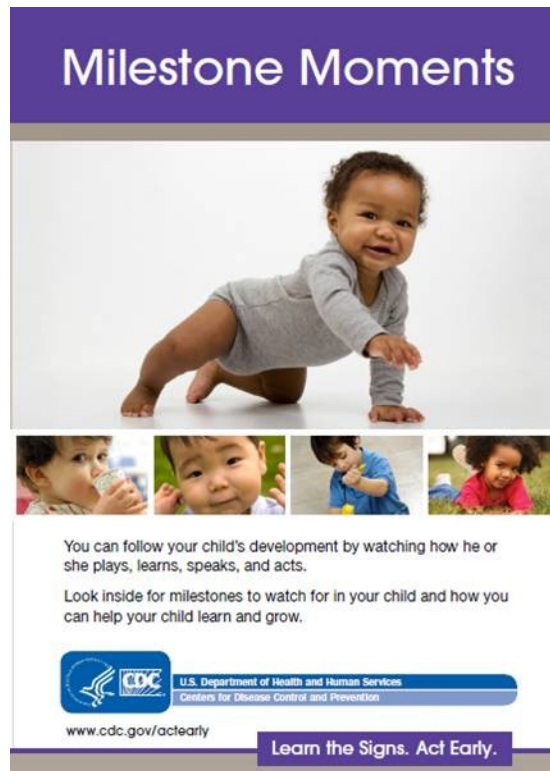
**8. Where did you see/hear about developmental milestones (things to look for in your child to tell if he is on track for his age?)**

*[select all that apply]*

- TV
- Radio
- Internet/Online
- Doctor’s Office
- My Child’s Teacher or Child care Provider
- Family Member/Friend

- [Insert relevant event/program, e.g., WIC office, library, community center, health fair]
- Magazine
- Newspaper
- Advertising
- I don't remember
- Other (Please specify \_\_\_\_\_)

9. Have you seen any of these materials in your community?



Yes     No

Yes     No



### It's time to change how we view a child's growth.

As they grow, children are always learning new things. These are just some of the things you should be looking for as your child grows. Because every child develops at his or her own pace, your child may reach these milestones slightly before or after other children the same age. Use this as a guide, and if you have any concerns, talk with your child's doctor or nurse.

- By the end of 7 months, many children are able to:
  - turn head when name is called
  - smile back at another person
  - respond to sound with sounds
  - enjoy social play (such as peek-a-boo)
- By the end of 1 year (12 months), many children are able to:
  - use simple gestures (waving "bye-bye")
  - make sounds such as "ma" and "da"
  - imitate actions in their play (clap when you clap)
  - respond when told "no"
- By the end of 1 1/2 years (18 months), many children are able to:
  - do simple pretend play ("talk" on a toy phone)
  - point to interesting objects
  - look at object when you point at it and tell them to "look!"
  - use several single words unprompted
- By the end of 2 years (24 months), many children are able to:
  - use 2- to 4-word phrases
  - follow simple instructions
  - become more interested in other children
  - point to object or picture when named
- By the end of 3 years (36 months), many children are able to:
  - show affection for playmates
  - use 4- to 5-word sentences
  - imitate adults and playmates (run when other children run)
  - play make-believe with dolls, animals, and people ("feed" a teddy bear)
- By the end of 4 years (48 months), many children are able to:
  - use 5- to 6-word sentences
  - follow 3-step commands ("Get dressed. Comb your hair, and wash your face.")
  - cooperate with other children

Questions to ask your child's doctor or nurse:

- What can I do to keep track of my child's development?
- What should I do if I'm worried about my child's progress?
- Where can I go to get more information?
- Can you refer me to a specialist for more information?

The CDC's 100 Most Important Early Signs for Autism Spectrum Disorder (ASD) are based on research published in the journal *Journal of Autism and Developmental Disorders*. © 2010. All rights reserved. This information is for informational purposes only and is not intended to be used as a substitute for professional medical advice. Always consult your doctor for more information. ASD is a complex disorder with many causes. It is not caused by anything you did or did not do. For more information, visit [www.cdc.gov/autism](http://www.cdc.gov/autism) or call 1-800-CDC-INFO.

[www.cdc.gov/actearly](http://www.cdc.gov/actearly) | 1-800-CDC-INFO

**Learn the Signs. Act Early.**

- Yes     No     Yes     No

10. If you recall seeing any of the materials shown above, do you remember reading the information on the material? *[select only one]*

- Yes, I read the information     No, I did not read the information  
 I have not seen any of the materials shown above.

11. How old are you?

- Under 21 years old  
 21 - 34  
 35 - 45  
 46 or older

12. Do you identify yourself as Hispanic or Latino?

- Yes, Hispanic or Latino
- No, Not Hispanic or Latino

**13. Which of these groups would you say best represents your race? (Please select all that apply)**

- American Indian or Alaska Native
- Asian
- Black or African American
- Native Hawaiian or other Pacific Islander
- White

**14. What is the highest level of education you have completed?**

- Less than high school, no diploma
- High school diploma or GED
- Associate degree or some college (for example: AA, AS)
- Bachelor's degree or more (for example: BA, BS, MPH, PhD)

**15. What is your annual household income before taxes?**

- Less than \$15,080
- \$15,081 - \$20,080
- \$20,081 - \$31,200
- \$31,201 - \$41,600
- \$41,601 and above
- Unemployed

**(Questions 16-20) If you became concerned about your child's development (how your child plays, learns, speaks, or acts), how likely would you be to do each of the following?**

(Circle one number for each statement)

**16. Wait for a few (1-3) months to see if your concerns are resolved.**

Not at all likely      1      2      3      4      Extremely likely

17. Wait for 6 months or more to see if your concerns are resolved.

Not at all likely      1      2      3      4      Extremely likely

18. Talk with your child's doctor about your concerns as soon as possible.

Not at all likely      1      2      3      4      Extremely likely

19. Talk with your child's teacher or child care provider as soon as possible.

Not at all likely      1      2      3      4      Extremely likely

Not applicable (if your child does NOT have a teacher or child care provider)

20. Contact your local intervention program, school, or another local organization as soon as possible.

Not at all likely      1      2      3      4      Extremely likely

21. If you became concerned about your child's development (how your child plays, learns, speaks, or acts), when would you contact your child's doctor to discuss your concern?

*[select only one]*

- I would not contact my child's doctor about these concerns.
- I would continue to watch my child's development for a few months before contacting my child's doctor.
- I would discuss my concern at my child's next regularly scheduled doctor appointment.
- I would make a special appointment to talk with my child's doctor if my child's next regularly scheduled appointment was more than a month away.

22. Have you looked somewhere (for example, in a book, at a fact sheet, or on a website) to make sure your child's development (how your child plays, learns, speaks, and acts) is on track for his or her age?

Yes

No

23. Do you talk to your child's doctor or nurse about your child's development (how your child plays, learns, speaks, and acts)? (Circle one number)

Strongly disagree      1      2      3      4      Strongly Agree

***Thank you for your time!***